

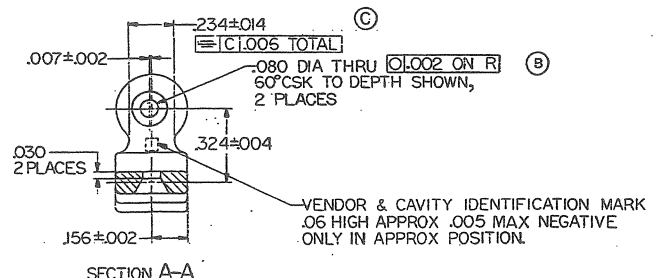
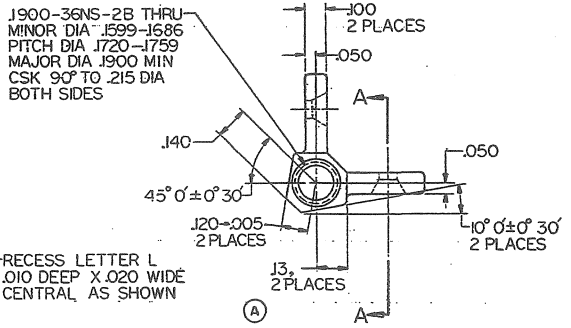
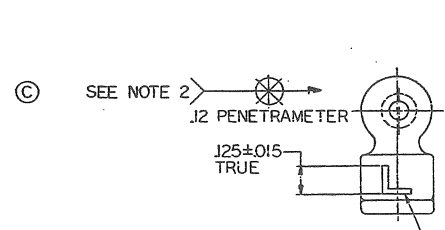
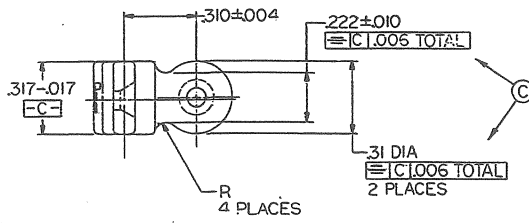
8 7 6 5 4 3 2 1

REVISIONS					
REV	ZONE	LTR	DESCRIPTION	DATE	APPROVED
			REDRAWN FROM COLT'S DRAWING D-81700 REV 8	27 APR 70	
A	(2)		SEE E0 HRD 02259	15 OCT 70	<i>[Signature]</i>
B	(1)		SEE MGR 10689	26 APR 71	<i>[Signature]</i>
C	(4)		SEE ERR MGR 20778	6 OCT 72	<i>[Signature]</i>
D			NOR W952009 80-02-15	80-05-15	<i>[Signature]</i>
E			NOR W552099 85-11-21	85-07-08	<i>[Signature]</i>

NOTICE: RESTRICTED AS TO USE AND DISCLOSURE

THIS ENTIRE DOCUMENT AND ALL INFORMATION THEREON IS PROPRIETARY TO COLT'S INC AND SHALL NOT BE REPRODUCED, DUPLICATED OR COPIED IN WHOLE OR IN PART, DISCLOSED OR MADE AVAILABLE TO ANY OTHER PERSON, FIRM OR CORPORATION OR OTHERWISE USED EXCEPT TO THE EXTENT NECESSARY FOR AND THEN ONLY IN CONNECTION WITH THE PREPARATION AND/OR SUBMISSION OF BIDS OR PROPOSALS RELATED TO A PROCUREMENT BEING EFFECTED BY THE UNITED STATES GOVERNMENT OR IN CONNECTION WITH THE MANUFACTURE IN THE UNITED STATES BY THE UNITED STATES GOVERNMENT OR UNDER A CONTRACT WITH THE UNITED STATES GOVERNMENT. THIS DOCUMENT WILL BE DEPOSED OF IN ACCORDANCE WITH INSTRUCTIONS ISSUED BY THE RESPONSIBLE CONTRACTING OFFICER UPON COMPLETION OF THE PURPOSE FOR WHICH IT WAS ISSUED.

- NOTES:
1. STEEL, INVESTMENT CASTING, CMPSN IC 4130, SPEC MIL-S-22141, EXCEPT THAT SILICON CONTENT SHALL BE .20 TO .70%.
  2. CLASSIFICATION AND INSPECTION OF CASTINGS SHALL BE IN ACCORDANCE WITH CLASS 2, GRADE B, MIL-STD-2175.
  3. FINISH  $12\frac{5}{8}$  EXCEPT AS NOTED.
  4. ALL EDGES AND FILLETS ARE .005 TO .020 R.
  5. EJECTOR PIN MARKS .005 POSITIVE TO .005 NEGATIVE.
  6. PARTING LINE FLASH TO BE .005 MAX.
  7. MIL-W-13855 APPLIES. (A)



ORIGINAL DESIGN ACTIVITY PSOM NO. 19 20 4  
 CURRENT DESIGN ACTIVITY PSOM NO. 19209  
 U.S. ARMY ARMAMENT RESEARCH AND DEVELOPMENT CENTER  
 DOWEL, NEW JERSEY 07804

MECHANICAL PROPERTIES	YS		UNLESS OTHERWISE SPECIFIED DIMENSIONS ARE IN INCHES	CONTRACT NO.	DATE 27 APR 1970	DRAWN BY	CHECKED BY	ENGINEER BY	SUBMITTED BY	APPROVED BY	SHEET	DRAWING NO.
	MINI											
MAX		ANGLES 2 F	SEE NOTE 1								8448539	
EL 2		3 PLACE DECIMALS ±.005										
RA		2 PLACE DECIMALS ±.010										
BH												
RM												
APPLICATION			FINAL PROTECTIVE FINISH	5.3.12 OF MIL-STD-77		SCALE 4/1		SHEET 1 OF 1		CDI		

Job: 14, 2004 12:21 AM