

4 3 2 1

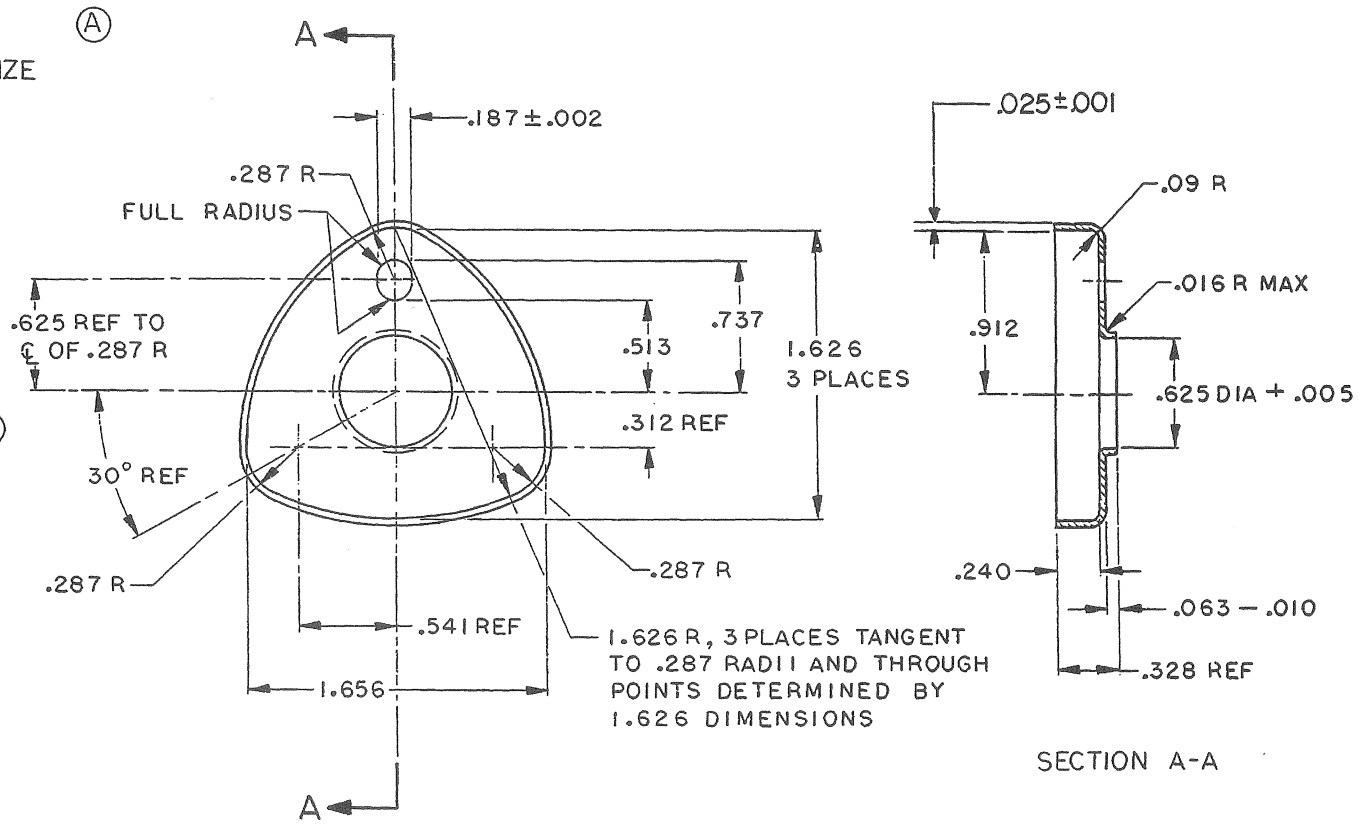
NOTICE: RESTRICTED AS TO USE AND DISCLOSURE

THIS ENTIRE DOCUMENT AND ALL INFORMATION THEREON IS PROPRIETARY TO COLT'S INC AND SHALL NOT BE REPRODUCED, DUPLICATED OR COPIED IN WHOLE OR IN PART, DISCLOSED OR MADE AVAILABLE TO ANY OTHER PERSON, FIRM, OR CORPORATION OR OTHERWISE USED EXCEPT TO THE EXTENT NECESSARY FOR AND THEN ONLY IN CONNECTION WITH THE PREPARATION AND/OR SUBMISSION OF BIDS OR PROPOSALS RELATED TO A PROCUREMENT BEING EFFECTED BY THE UNITED STATES GOVERNMENT OR IN CONNECTION WITH THE MANUFACTURE IN THE UNITED STATES EITHER BY THE UNITED STATES GOVERNMENT OR UNDER A CONTRACT WITH THE UNITED STATES GOVERNMENT. THIS DOCUMENT WILL BE DISPOSED OF IN ACCORDANCE WITH INSTRUCTIONS ISSUED BY THE RESPONSIBLE CONTRACTING OFFICER UPON COMPLETION OF THE PURPOSE FOR WHICH IT WAS ISSUED.

REVISIONS					
MF	ZONE	LTR	DESCRIPTION	DATE	APPROVED
M			REDRAWN FROM COLT'S DRAWING	27 APR 70	
			C62087 REVISION A		
	A		(3) SEE ERR HQR 20827	14 DEC 72	RE
	B		NORWES0026	82-05-21	83-02-03 [Signature]

NOTE:

1. STEEL, CMPSN 1045 THRU 1070, COLD ROLLED, SPHEROIDIZE ANNEALED, SPEC QQ-S-700.
2. FINISH 125/√.
3. BREAK SHARP EDGES .010" R MAX.
4. FINISH 5.3.1.2 OF MIL-STD-171.
5. HEAT TREATMENT: QUENCH AND TEMPER TO HARDNESS SPECIFIED.
6. MIL-W-13855 APPLIES.



CURRENT DESIGN ACTIVITY
F5CM NO. 19200
U S ARMY ARMAMENT RESEARCH AND DEVELOPMENT CENTER
DOVER, NEW JERSEY 07801

DEPT OF THE ARMY
U.S. ARMY WEAPONS COMMAND
ROCK ISLAND, ILLINOIS, 61201

CAP, HANDGUARD

MECHANICAL PROPERTIES		UNLESS OTHERWISE SPECIFIED DIMENSIONS ARE IN INCHES		CONTRACT NO:	
YS MIN		TOLERANCES:		DATE 27 APR 1970	
YS MAX		ANGLES ±		PREPARED [Signature] 29-184	
EL 2		3 PLACE DECIMALS ± .005		CHECKED [Signature]	
RA		2 PLACE DECIMALS ± .01		ENGINEER [Signature]	
BH	F8448601 M16	MATERIAL		SUBMITTED	
	F8448522 M16A1	SEE NOTE 1		F. P. Gilhooly	
RH 15N 79.5-815	NEXT ASSY USED ON	FINAL PROTECTIVE FINISH		APPROVED	
	APPLICATION	SEE NOTE 4		E. J. Henry	

SIZE	CODE IDENT NO.	DRAWING NO.
C	19204	8448564
SCALE 2/1	SHEET OF	

C8448564