

5

4

3

2

1

## NOTICE RESTRICTED AS TO USE AND DISCLOSURE

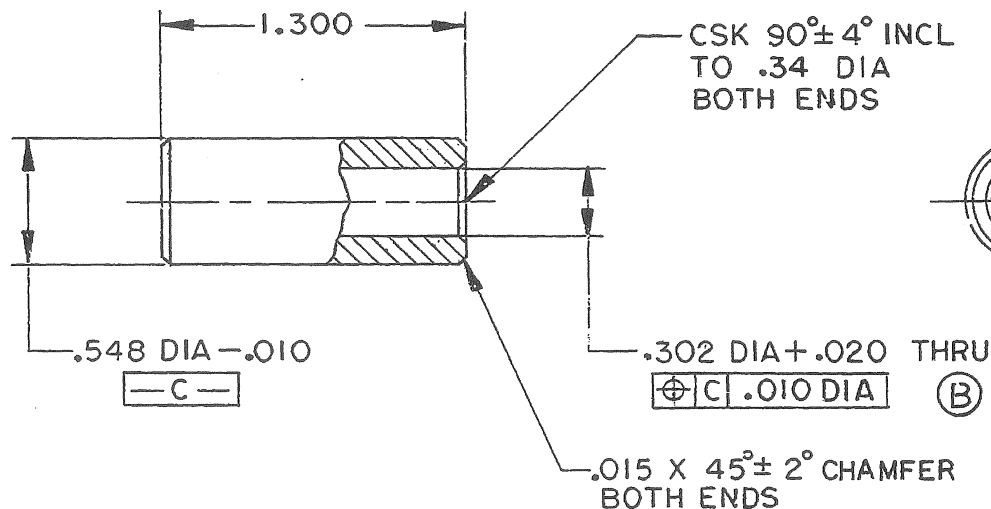
THIS ENTIRE DOCUMENT AND ALL INFORMATION THEREON IS PROPRIETARY TO COLT'S INC AND SHALL NOT BE REPRODUCED, DUPLICATED OR COPIED IN WHOLE OR IN PART, DISCLOSED OR MADE AVAILABLE TO ANY OTHER PERSON, FIRM, OR CORPORATION OR OTHERWISE USED EXCEPT TO THE EXTENT NECESSARY FOR AND THEN ONLY IN CONNECTION WITH THE PREPARATION AND/OR SUBMISSION OF BIDS OR PROPOSALS RELATED TO A PROCUREMENT BEING EFFECTED BY THE UNITED STATES GOVERNMENT OR IN CONNECTION WITH THE MANUFACTURE IN THE UNITED STATES OTHER BY THE UNITED STATES GOVERNMENT OR UNDER A CONTRACT WITH THE UNITED STATES GOVERNMENT. THIS DOCUMENT WILL BE DISPOSED OF IN ACCORDANCE WITH INSTRUCTIONS ISSUED BY THE RESPONSIBLE CONTRACTING OFFICER UPON COMPLETION OF THE PURPOSE FOR WHICH IT WAS ISSUED.

## REVISIONS

ME	ZONE	LTR	DESCRIPTION	DATE	APPROVED
M			REDRAWN FROM COLT'S DRAWING	27 APR 70	
			B62412 REVISTON A		
M		A	(2) SEE HQR 10689	26 APR 71	JPB
M		B	SEE ERR HQR 20778	6 OCT 72	RC
		C	NORWES0026 82-05-21	83-02-03	JPB

## NOTE:

1. AL ALLOY, 7075-T6 OR T651, COLD DRAWN PER QQ-A-225/9 OR AL ALLOY 7075-T6 OR T6510, EXTRUDED PER QQ-A-200/11.
2. FINISH  $125\sqrt{}$ .
3. ALL DIMENSIONS APPLY BEFORE FINISH.
4. FINISH MIL-A-8625, TYPE III, CLASS I, FILM THICKNESS  $.0010 \pm .0002$ .
5. MIL-W-13855 APPLIES.



CURRENT DESIGN ACTIVITY FSCM NO. 19200  
U S ARMY ARMAMENT RESEARCH AND DEVELOPMENT CENTER  
DOVER, NEW JERSEY 07801

MECHANICAL PROPERTIES		UNLESS OTHERWISE SPECIFIED DIMENSIONS ARE IN INCHES		CONTRACT NO:		DEPT OF THE ARMY	
YS MIN		TOLERANCES:		DATE 27 APR 1970		U.S. ARMY WEAPONS COMMAND	
YS MAX		ANGLES ±		PREP RGA R.D.M.		ROCK ISLAND, ILLINOIS, 61201	
EL 2		3 PLACE DECIMALS ± .005		CHK D.M. W. Chapman		SPACER, BUFFER	
RA		2 PLACE DECIMALS ± .01		ENGR P. Smart D. Billiet			
BH		MATERIAL		SUBMITTED		SIZE CODE IDENT NO. DRAWING NO.	
RH		SEE NOTE 1		APPROVED		B 19204 8448620	
		NEXT ASSY USED ON		P. J. Hurry		SCALE 2/1	
		APPLICATION				SHEET 1 OF 1	
		SEE NOTE 4				CDI	

B 8448620