

REVISIONS				
MODEL REV	DRAWING REV	DESCRIPTION	DATE(YEAR-MO-DA)	APPROVED
N/A	D	SEE ERR HOR 50646	1975-05-16	LB
N/A	E	NOR W9S2009 / 1980-02-13	1980-05-16	
N/A	F	NOR GIS2018 / 1991-07-08	1991-10-11	RR/SR
N/A	G	NOR G2S3059 / 1992-07-16 (ECP G2S3060 / 1992-06-30)	1992-08-11	AJL/SR
-	H	NOR L2S3042 / 2002-08-05	2002-09-26	JJW
A	J	NOR L3S3161 / 2004-03-31	2004-08-13	RLV
B	K	NOR L0SS3023 / 2005-05-04	2005-06-07	RLV
C	L	NOR L06S5168 / 2006-06-28	2006-07-28	BMG

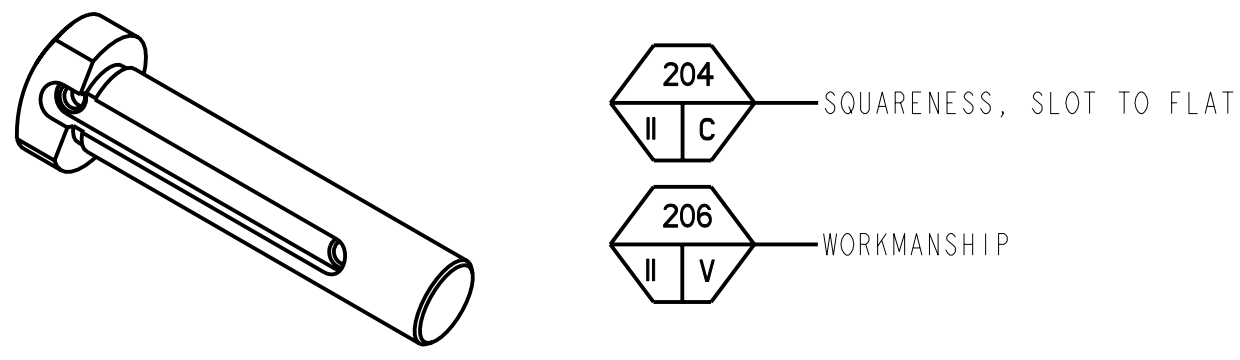
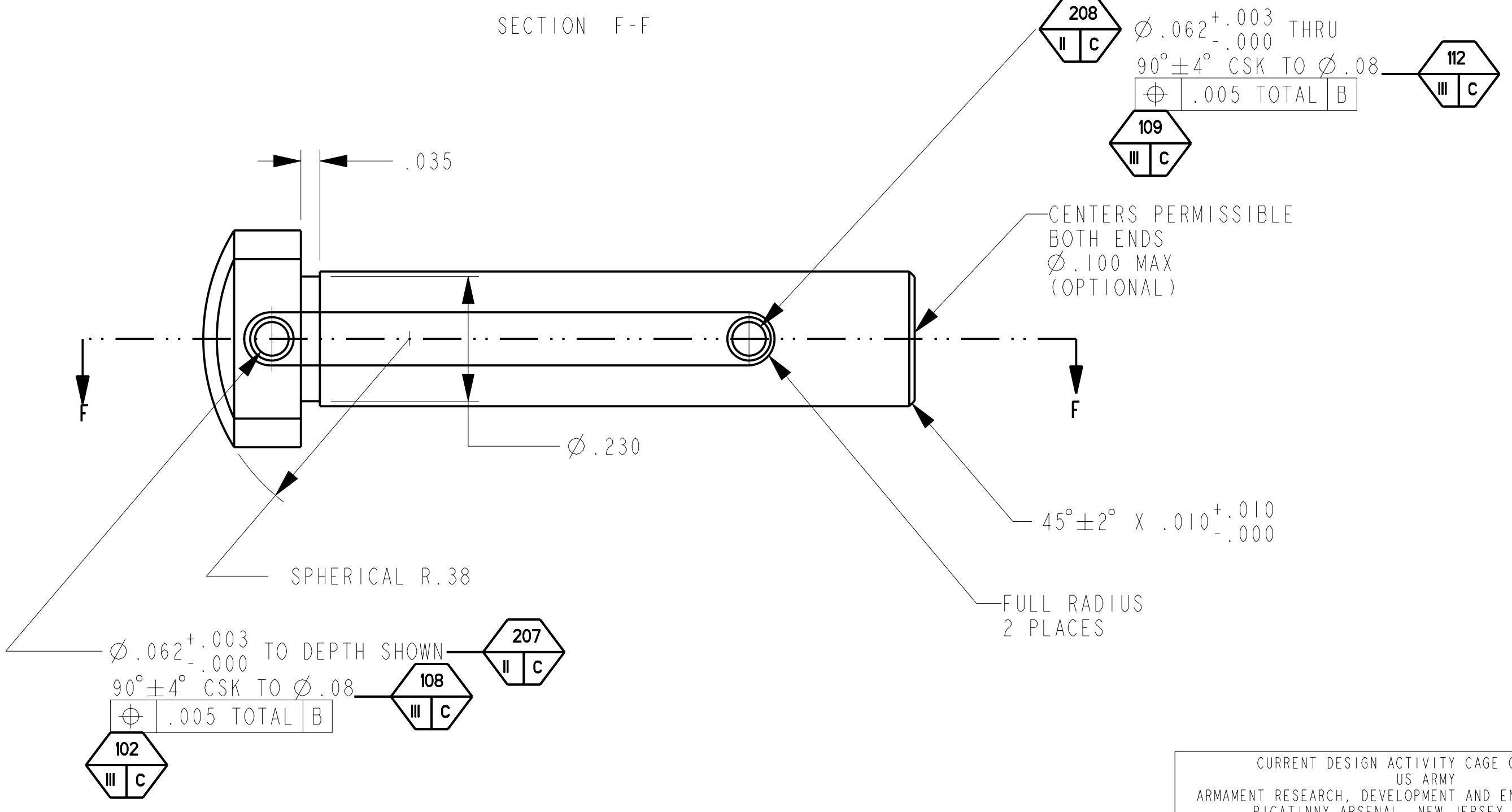
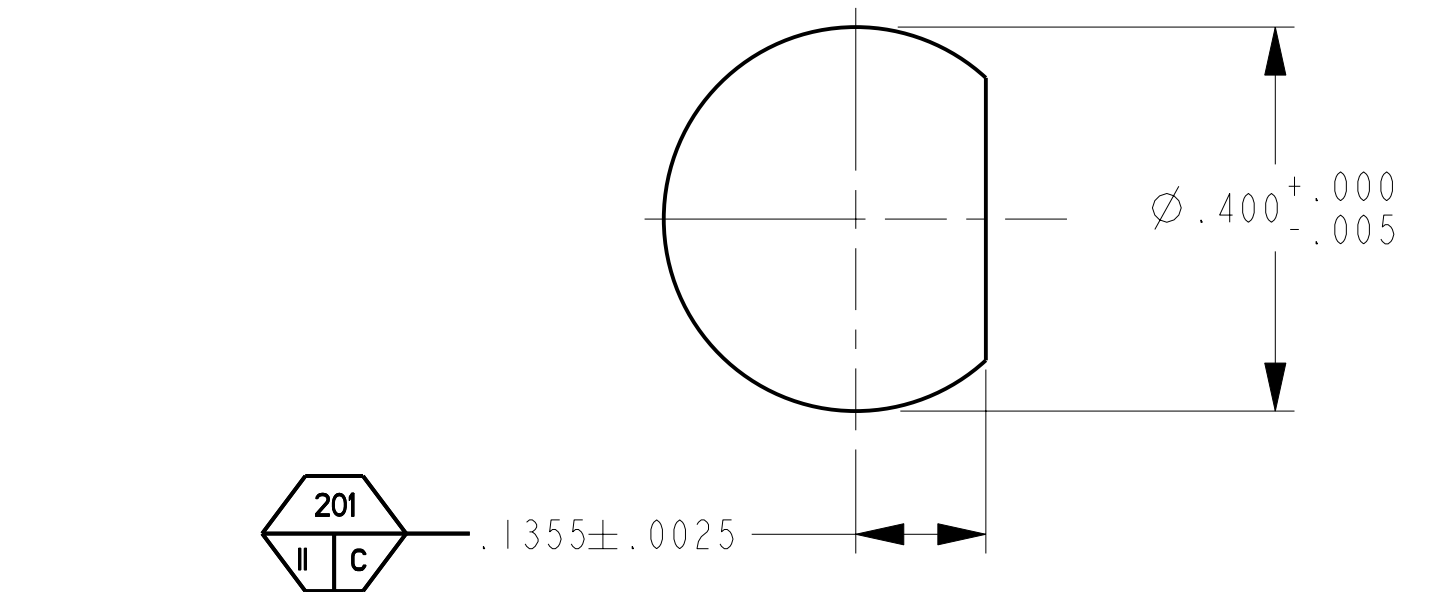
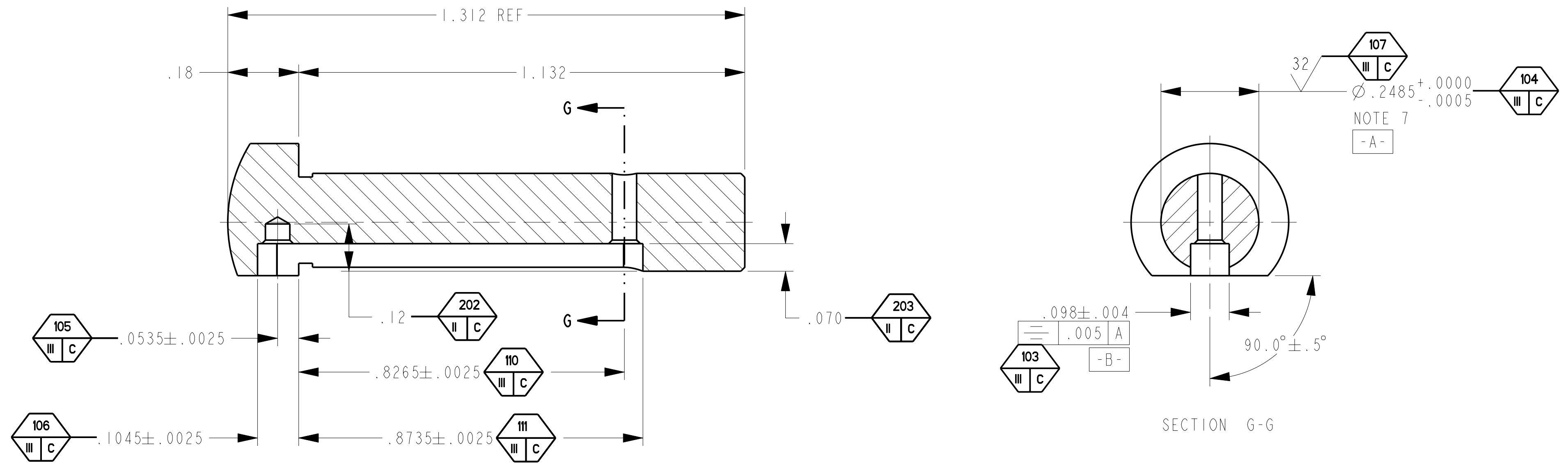
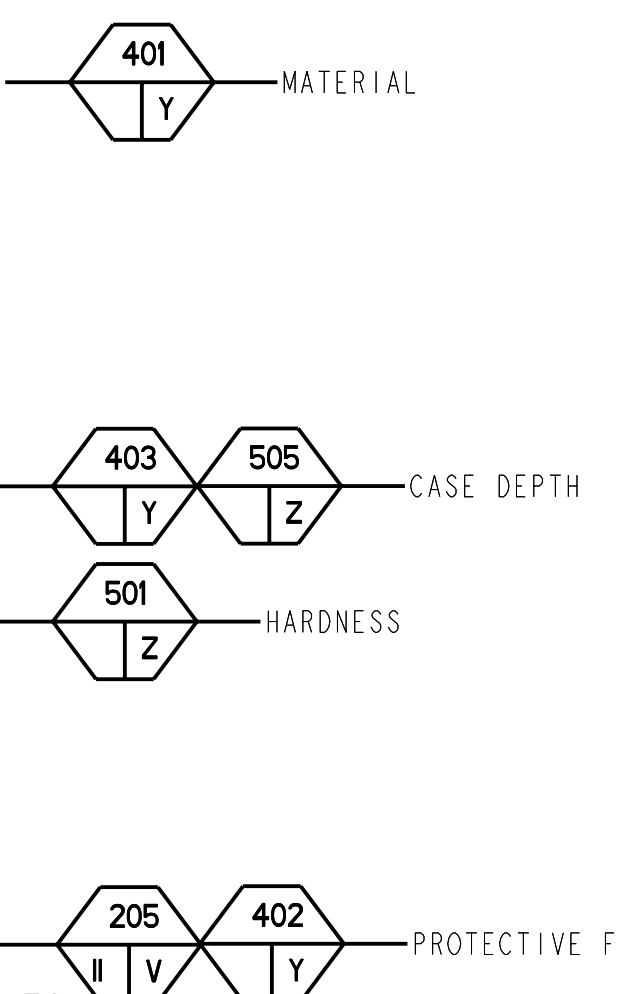
NOTICE: RESTRICTED AS TO USE AND DISCLOSURE

THIS ENTIRE DOCUMENT AND ALL INFORMATION IS PROPRIETARY TO COLT INC. AND SHALL NOT BE REPRODUCED, DUPLICATED OR COPIED IN WHOLE OR IN PART, DISCLOSED OR MADE AVAILABLE TO ANY OTHER PERSON, FIRM, OR CORPORATION OR OTHERWISE USED EXCEPT TO THE EXTENT NECESSARY FOR AND THEN ONLY IN CONNECTION WITH THE PREPARATION CONNECTION WITH THE PREPARATION AND/OR SUBMISSION OF BIDS OR PROPOSALS RELATED TO A PROCUREMENT BEING EFFECTED BY THE UNITED STATES EITHER BY THE UNITED STATES GOVERNMENT OR UNDER CONTRACT WITH THE UNITED STATES GOVERNMENT. THIS DOCUMENT WILL BE DISPOSED OF IN ACCORDANCE WITH THE INSTRUCTIONS ISSUED BY THE RESPONSIBLE CONTRACTING OFFICER UPON COMPLETION OF THE PURPOSE FOR WHICH IT WAS ISSUED.

SPECIAL LICENSE RIGHTS
 THE GOVERNMENT'S RIGHTS: TO USE, MODIFY, REPRODUCE, RELEASE, PERFORM, DISPLAY, OR DISCLOSE THESE DATA ARE RESTRICTED BY CONTRACT NO. DAAFO3-67-C-108, LICENSE NO. DAAFO3-67-C-108. ANY REPRODUCTION OF TECHNICAL DATA OR PORTIONS THEREOF MARKED WITH THIS LEGEND MUST ALSO REPRODUCE THE MARKINGS.

DUE TO GOVERNMENT GENERATED ENGINEERING CHANGES, THERE MAY BE DATA AND/OR TOLERANCES NOT PROPRIETARY TO COLT'S.

- NOTES
- MIL-W-13855 APPLIES.
 - MATERIAL: STEEL, ALLOY, AISI 8620 OR 86L20 PER ASTM A 322 OR ASTM A 108.
 - SURFACE FINISH: 125 EXCEPT AS NOTED.
 - FILLET RADII .010 MAX.
 - BREAK ALL SHARP EDGES .010 MAX.
 - HEAT TREATMENT: CARBURIZE TO TOTAL CASE DEPTH .010⁺.005_{-.000} AND ROCKWELL HARDNESS 15N 89 TO 91 OR EQUIVALENT.
 - POST-HEAT TREATMENT MACHINING ALLOWED ON SURFACES INDICATED. MAXIMUM REDUCTION IN DIAMETER AFTER POST-HEAT TREATMENT MACHINING: .006.
 - PROTECTIVE FINISH: FINISH 5.3.1.2 OF MIL-STD-171.
 - QUALITY ASSURANCE PROVISION REQUIREMENTS PER DRAWING 12993884 APPLY.



CURRENT DESIGN ACTIVITY CAGE CODE 19200
 US ARMY
 ARMAMENT RESEARCH, DEVELOPMENT AND ENGINEERING CENTER
 PICATINNY ARSENAL, NEW JERSEY 07806-5000

THIS DRAWING WAS GENERATED FROM A SOLID MODEL AND IS CAD MAINTAINED. CHANGES SHALL BE INCORPORATED BY THE DESIGN ACTIVITY.

PART NO. 8448621

ISOMETRIC VIEW
 SCALE 2.000

DISTRIBUTION STATEMENT F: FURTHER DISTRIBUTION ONLY AS DIRECTED BY US ARMY; ARDEC, AMSTA-AR-CCL-F, ROCK ISLAND, IL; 1993-09-14.

PMIC	M231	DO NOT SCALE DRAWING UNLESS OTHERWISE SPECIFIED DIMENSIONS ARE IN INCHES	CONTRACT NUMBER		DESIGN ACTIVITY US ARMY ROCK ISLAND ARSENAL ROCK ISLAND, ILLINOIS
	M4A1		CONTRACTOR		
MECHANICAL PROPERTIES	M4	TOLERANCES ON ANGLES ± ° 2 PLACE DECIMALS ± .01 3 PLACE DECIMALS ± .005	DRAWN BY G. STRAHL	DATE(YEAR-MO-DA) 1970-04-27	PIN, RECEIVER PIVOT
	9390011 M16A4		CHECKER J. MACON-ESERV	ENGINEER J. WINDHAM	
YP	9327230 M16A3	THIRD ANGLE PROJECTION	ENGINEER L. KO	QUALITY ENGINEER E. SESE	SIZE D
TS	8448604 M16A2		DRAWING APPROVAL L. BRUNTON 2002-08-05	DESIGN APPROVAL R. ELBE 2002-08-05	CAGE CODE 19204
EL2	8448578 M16A1	MATL ENGR MODELED BY G. STRAHL	APPLICATION		DWG NO. 8448621
RA	NEXT ASSY USED ON		SCALE 5.000 UNIT WT. 0.019 SHEET 1 OF 1		
BH					
RH					