

NOTICE: RESTRICTED AS TO USE AND DISCLOSURE

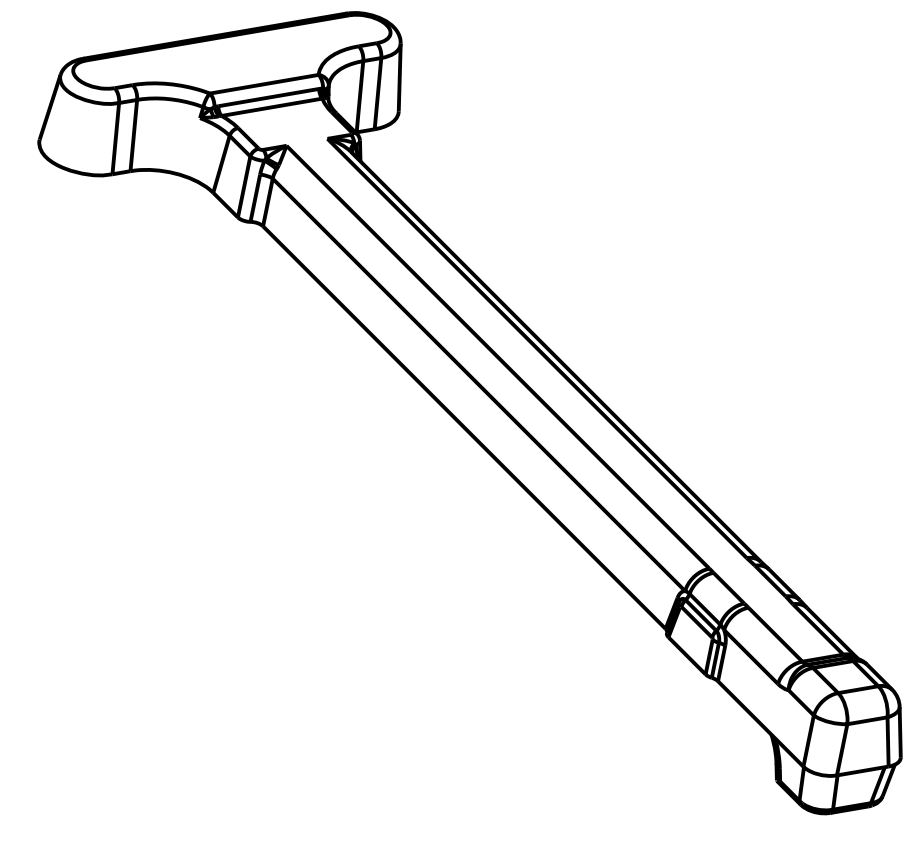
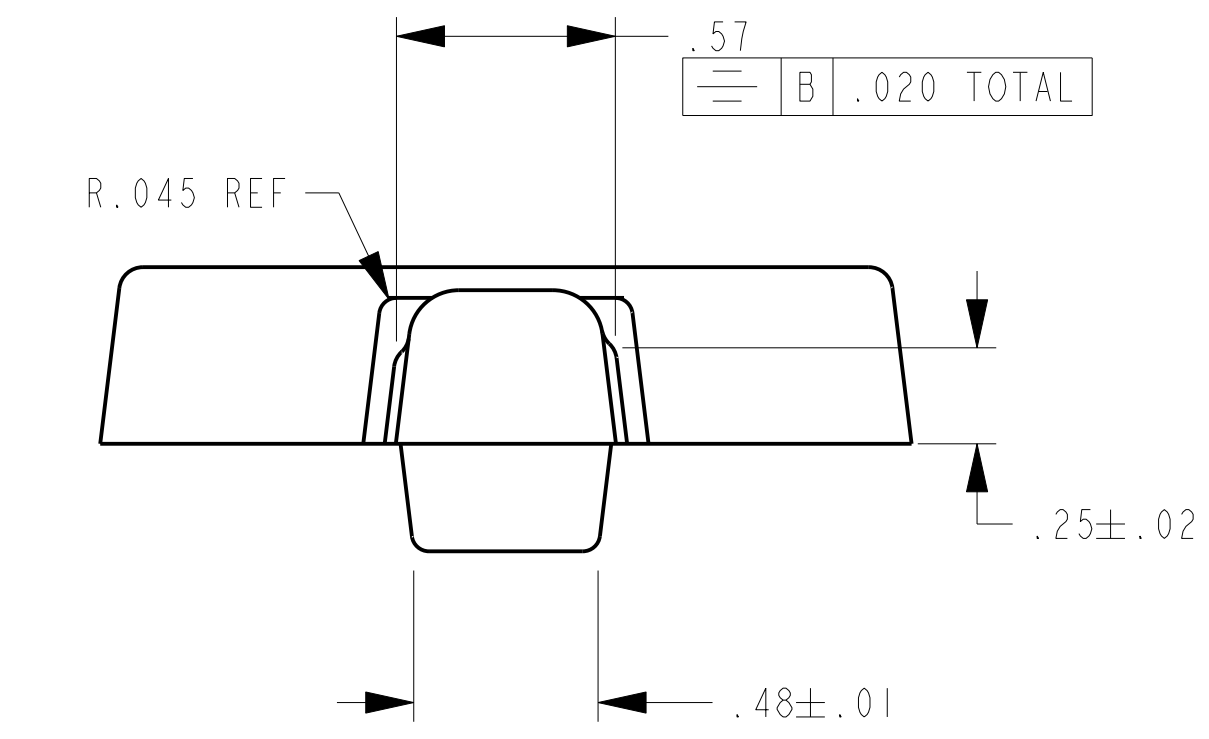
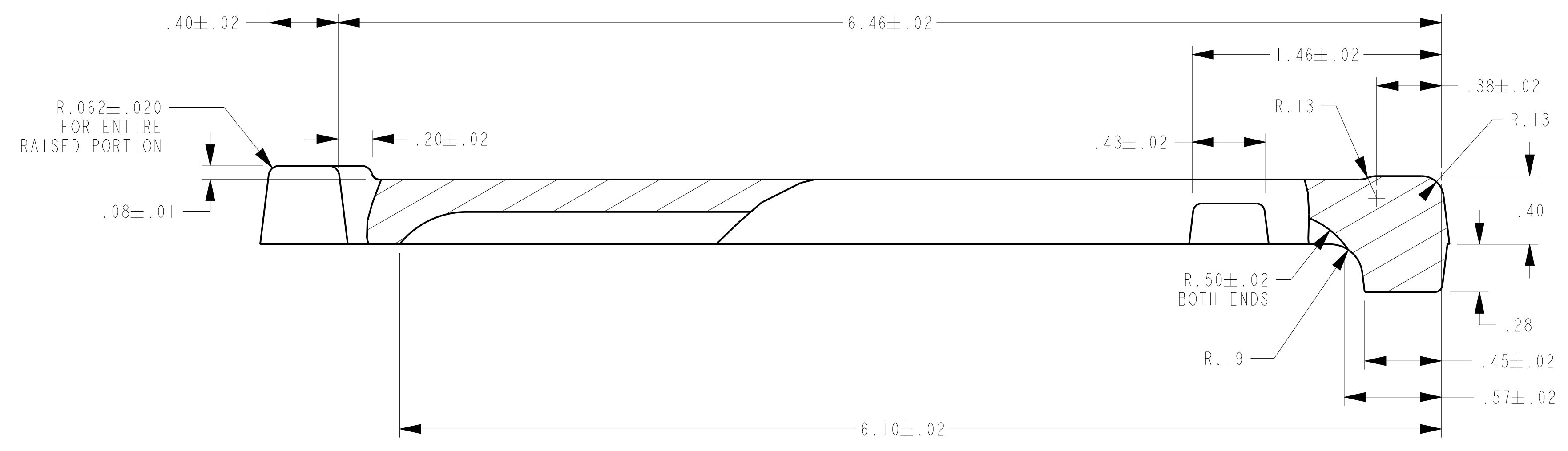
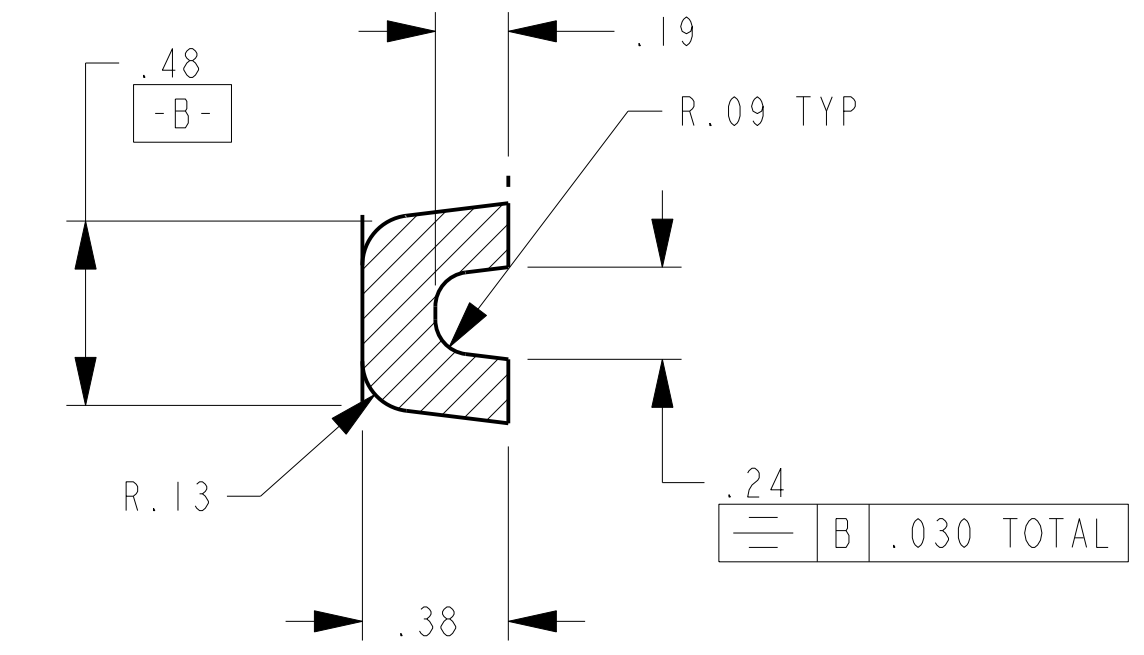
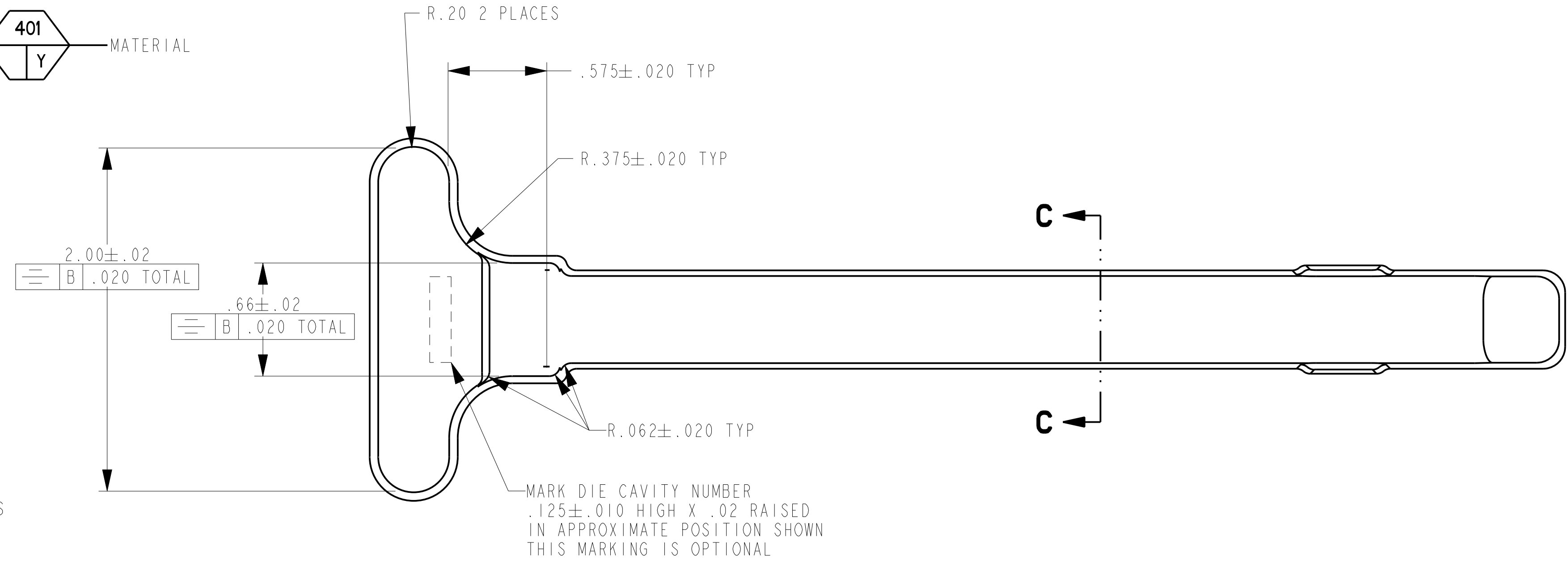
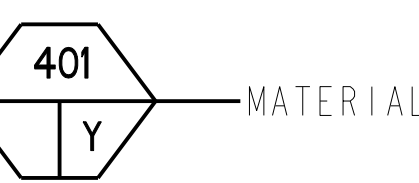
THIS ENTIRE DOCUMENT AND ALL INFORMATION IS PROPRIETARY TO COLT INC. AND SHALL NOT BE REPRODUCED, DUPLICATED OR COPIED IN WHOLE OR IN PART, DISCLOSED OR MADE AVAILABLE TO ANY OTHER PERSON, FIRM, OR CORPORATION OR OTHERWISE USED EXCEPT TO THE EXTENT NECESSARY FOR AND THEN ONLY IN CONNECTION WITH THE PREPARATION CONNECTION WITH THE PREPARATION AND/OR SUBMISSION OF BIDS OR PROPOSALS RELATED TO A PROCUREMENT BEING EFFECTED BY THE UNITED STATES EITHER BY THE UNITED STATES GOVERNMENT OR UNDER CONTRACT WITH THE UNITED STATES GOVERNMENT. THIS DOCUMENT WILL BE DISPOSED OF IN ACCORDANCE WITH THE INSTRUCTIONS ISSUED BY THE RESPONSIBLE CONTRACTING OFFICER UPON COMPLETION OF THE PURPOSE FOR WHICH IT WAS ISSUED.

SPECIAL LICENSE RIGHTS  
 THE GOVERNMENT'S RIGHTS TO USE, MODIFY, REPRODUCE, RELEASE, PERFORM, DISPLAY, OR DISCLOSE THESE DATA ARE RESTRICTED BY CONTRACT NO. DAAFO3-67-C-108, LICENSE NO. DAAFO3-67-C-108. ANY REPRODUCTION OF TECHNICAL DATA OR PORTIONS THEREOF MARKED WITH THIS LEGEND MUST ALSO REPRODUCE THE MARKINGS.

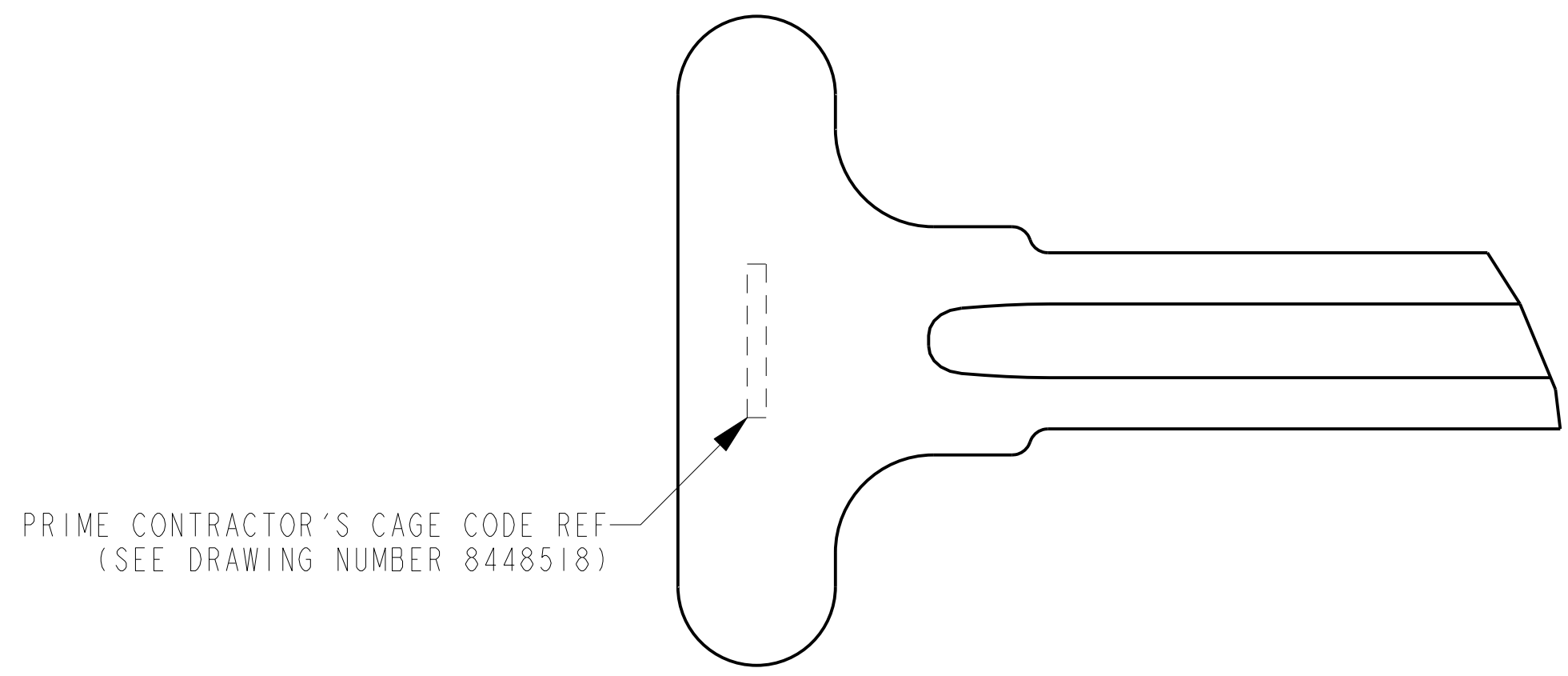
DUE TO GOVERNMENT GENERATED ENGINEERING CHANGES, THERE MAY BE DATA AND/OR TOLERANCES NOT PROPRIETARY TO COLT'S.

REVISIONS				
MODEL REV	DRAWING REV	DESCRIPTION	DATE(YEAR-MO-DA)	APPROVED
N/A	C	NOR GIS2018 / 1991-07-08	1991-10-11	
N/A	D	NOR G3S3059 / 1993-07-07	1993-09-01	
N/A	E	NOR G4S3073 / 1994-06-20	1994-07-27	
N/A	F	NOR LOS2048 / 2001-03-13	2001-04-06	RLV
N/A	G	NOR LIS2102 / 2001-08-23	2001-09-26	RLV
-	H	NOR L2S2028 / 2002-05-24	2002-07-30	JJW
A	J	NOR L10S3087 / 2010-07-29	2010-08-03	BMG

- NOTES
- MIL-W-13855 APPLIES.
  - MATERIAL: ALUMINUM ALLOY 7075-T6 PER AMS-QQ-A-367, BHN 135 MIN, 500 KG LOAD.
  - DIMENSIONS ARE GIVEN TO THEORETICAL PROJECTED CORNERS.
  - DRAFT ANGLE:  $7^\circ \pm 1^\circ$ .
  - TOLERANCES EXCEPT AS NOTED:
    - A. MISMATCH: .015 MAX.
    - B. ANGLES:  $\pm 1^\circ$ .
    - C. STRAIGHTNESS: .016.
    - D. FLASH EXTENSION: .03 MAX.
    - E. 2 PLACE DECIMALS:  $+.03$   
 $-.01$
  - EDGE RADII EXCEPT AS NOTED: R.045 $\pm$ .015.
  - FILLET RADII EXCEPT AS NOTED: R.12 $\pm$ .03.
  - 
  - 
  - QUALITY ASSURANCE PROVISION REQUIREMENTS PER DRAWING NUMBER 12993884 APPLY.



ISOMETRIC VIEW  
SCALE 1.000



PRIME CONTRACTOR'S CAGE CODE REF (SEE DRAWING NUMBER 8448518)

THIS DRAWING WAS GENERATED FROM A SOLID MODEL AND IS CAD MAINTAINED. CHANGES SHALL BE INCORPORATED BY THE DESIGN ACTIVITY.

PART NO. 8448647

CURRENT DESIGN ACTIVITY CAGE CODE 19200  
 US ARMY  
 ARMAMENT RESEARCH, DEVELOPMENT AND ENGINEERING CENTER  
 PICATINNY ARSENAL, NEW JERSEY 07806-5000

PMIC	M231	DO NOT SCALE DRAWING UNLESS OTHERWISE SPECIFIED DIMENSIONS ARE IN INCHES	CONTRACT NUMBER		DESIGN ACTIVITY US ARMY ROCK ISLAND ARSENAL ROCK ISLAND, ILLINOIS
	M4A1		CONTRACTOR		
MECHANICAL PROPERTIES	M4	TOLERANCES ON ANGLES $\pm$ ° 2 PLACE DECIMALS $\pm$ 3 PLACE DECIMALS $\pm$	DRAWN BY R. NICEWANNER	DATE(YEAR-MO-DA) 1970-04-27	CHARGING HANDLE FORGING
	M16A4		CHECKER J. WINDHAM	ENGINEER J. WINDHAM	
YP	M16A3	THIRD ANGLE PROJECTION	ENGINEER L. KO	QUALITY ENGINEER E. SESE	SIZE D
TS	M16A2		DRAWING APPROVAL L. BRUNTON 2002-05-24		
EL2	M16A1		APPLICATION	DESIGN APPROVAL R. ELBE 2002-05-24	
RA	8448518 M16	MATL ENGR		MODELED BY R. NICEWANNER	SCALE 2.000
BH					SHEET 1 OF 1
RH					

DISTRIBUTION STATEMENT F: FURTHER DISTRIBUTION ONLY AS DIRECTED BY US ARMY ARDEC, AMSTA-AR-CCL-F, ROCK ISLAND, IL; 1993-09-14.