

NOTICE: RESTRICTED AS TO USE AND DISCLOSURE

THIS ENTIRE DOCUMENT AND ALL INFORMATION IS PROPRIETARY TO COLT INC. AND SHALL NOT BE REPRODUCED, DUPLICATED OR COPIED IN WHOLE OR IN PART, DISCLOSED OR MADE AVAILABLE TO ANY OTHER PERSON, FIRM, OR CORPORATION OR OTHERWISE USED EXCEPT TO THE EXTENT NECESSARY FOR AND THEN ONLY IN CONNECTION WITH THE PREPARATION CONNECTION WITH THE PREPARATION AND/OR SUBMISSION OF BIDS OR PROPOSALS RELATED TO A PROCUREMENT BEING EFFECTED BY THE UNITED STATES EITHER BY THE UNITED STATES GOVERNMENT OR UNDER CONTRACT WITH THE UNITED STATES GOVERNMENT. THIS DOCUMENT WILL BE DISPOSED OF IN ACCORDANCE WITH THE INSTRUCTIONS ISSUED BY THE RESPONSIBLE CONTRACTING OFFICER UPON COMPLETION OF THE PURPOSE FOR WHICH IT WAS ISSUED.

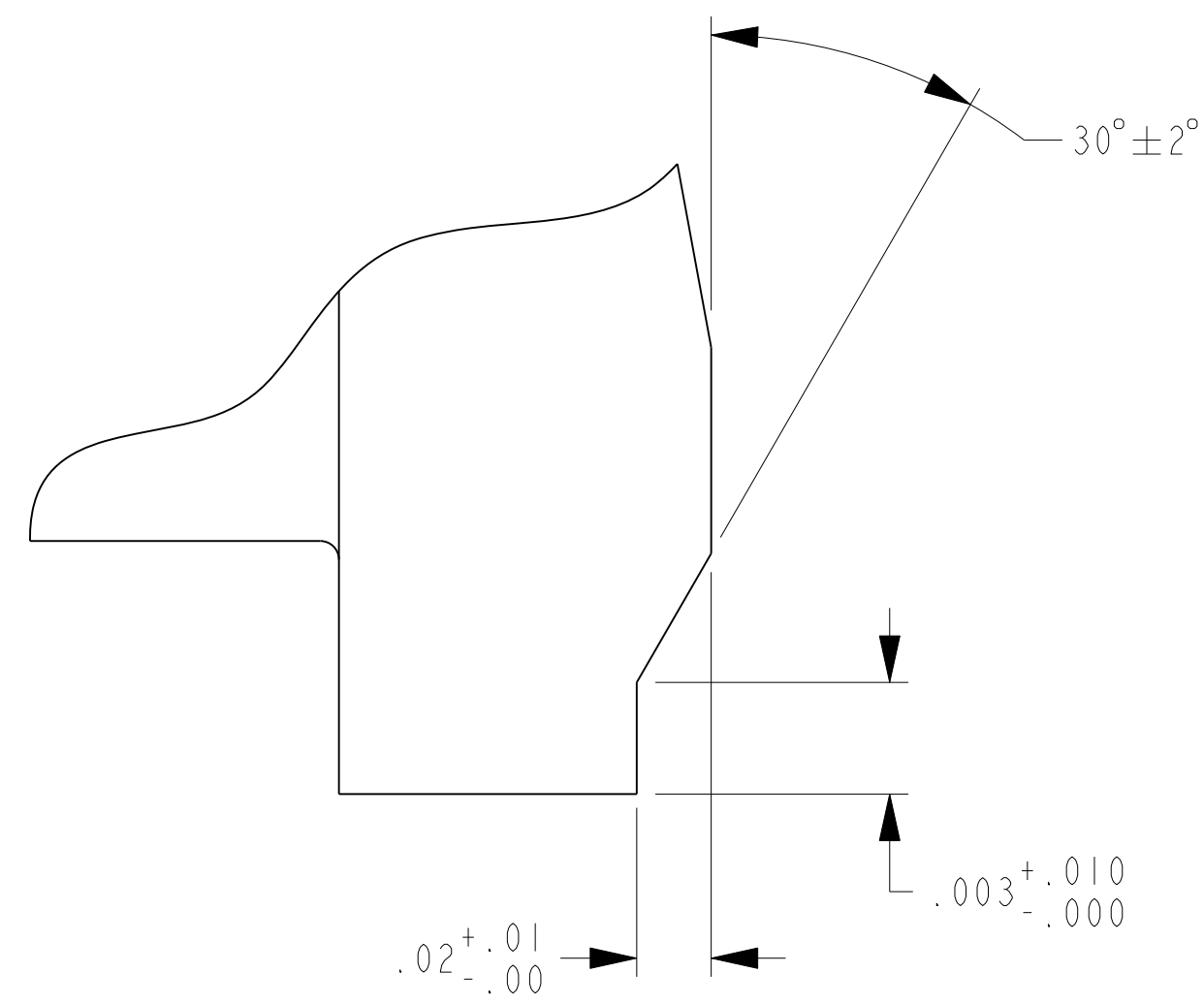
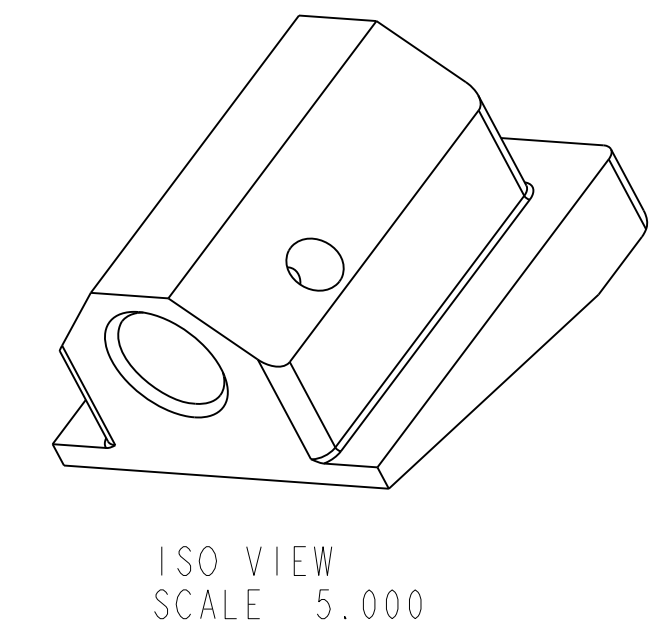
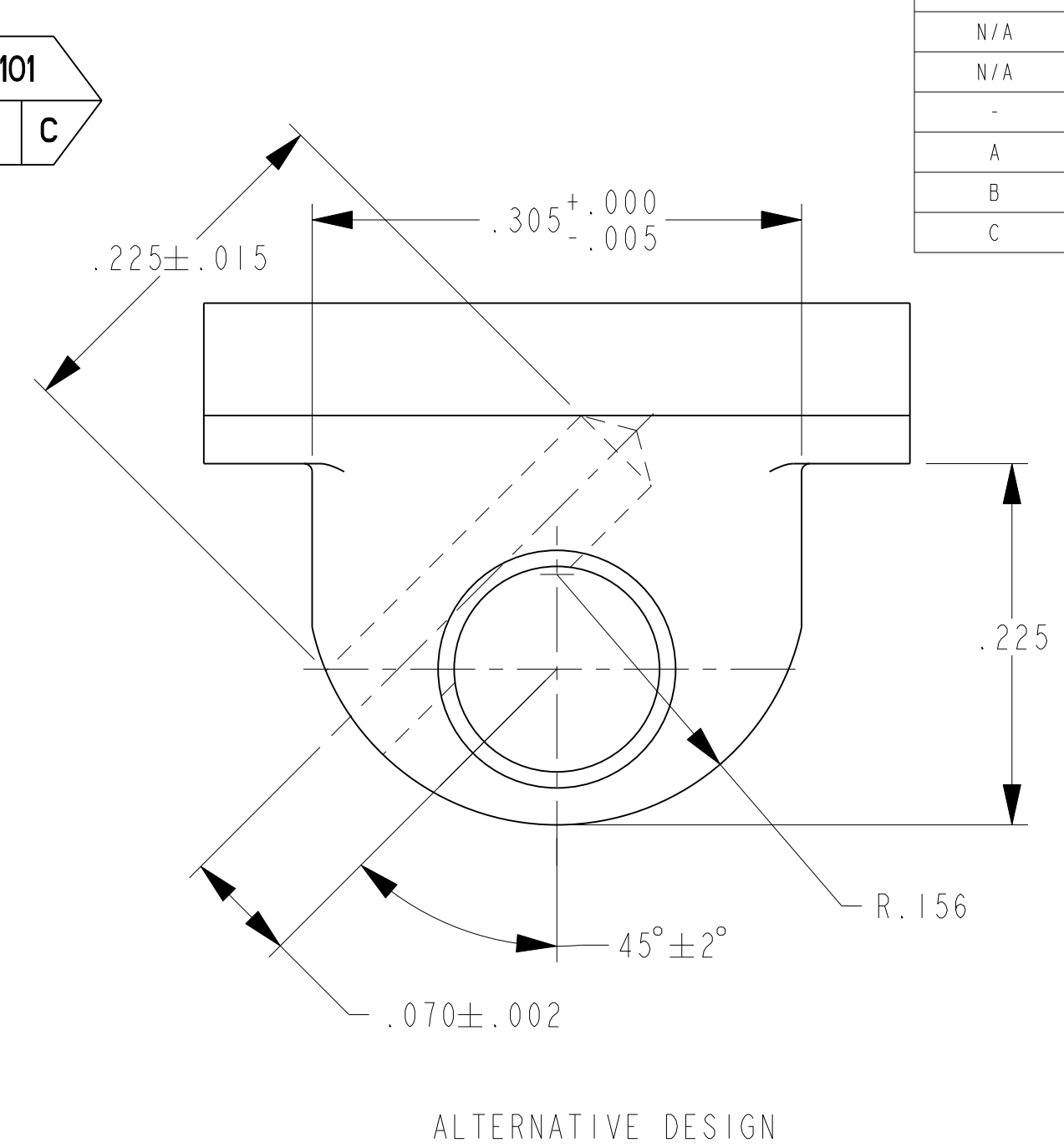
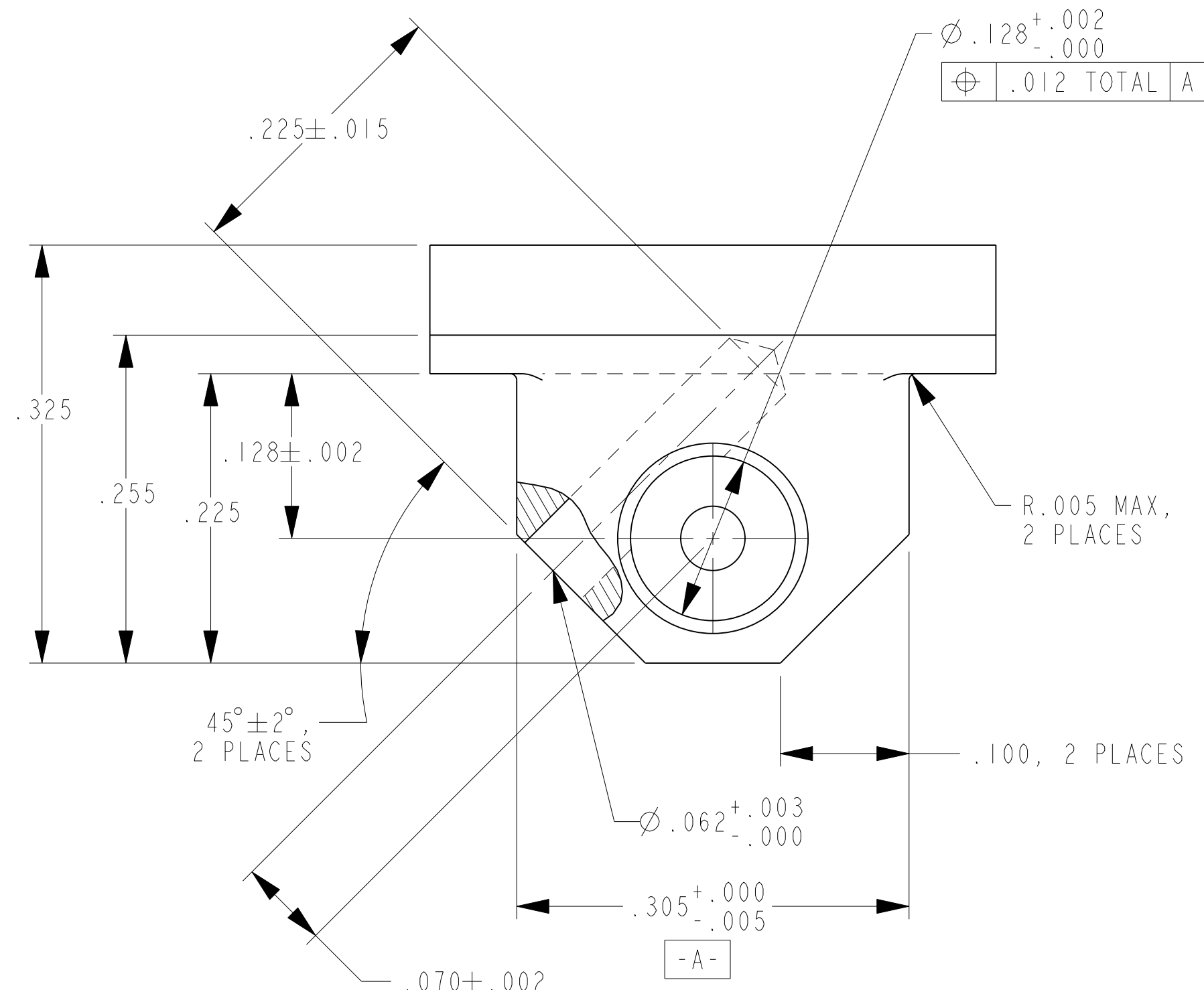
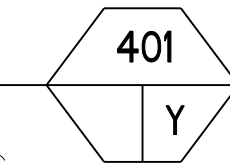
SPECIAL LICENSE RIGHTS THE GOVERNMENT'S RIGHTS TO USE, MODIFY, REPRODUCE, RELEASE, PERFORM, DISPLAY, OR DISCLOSE THESE DATA ARE RESTRICTED BY CONTRACT NO. DAAFO3-67-C-108, LICENSE NO. DAAFO3-67-C-108. ANY REPRODUCTION OF TECHNICAL DATA OR PORTIONS THEREOF MARKED WITH THIS LEGEND MUST ALSO REPRODUCE THE MARKINGS.

DUE TO GOVERNMENT GENERATED ENGINEERING CHANGES, THERE MAY BE DATA AND/OR TOLERANCES NOT PROPRIETARY TO COLT'S.

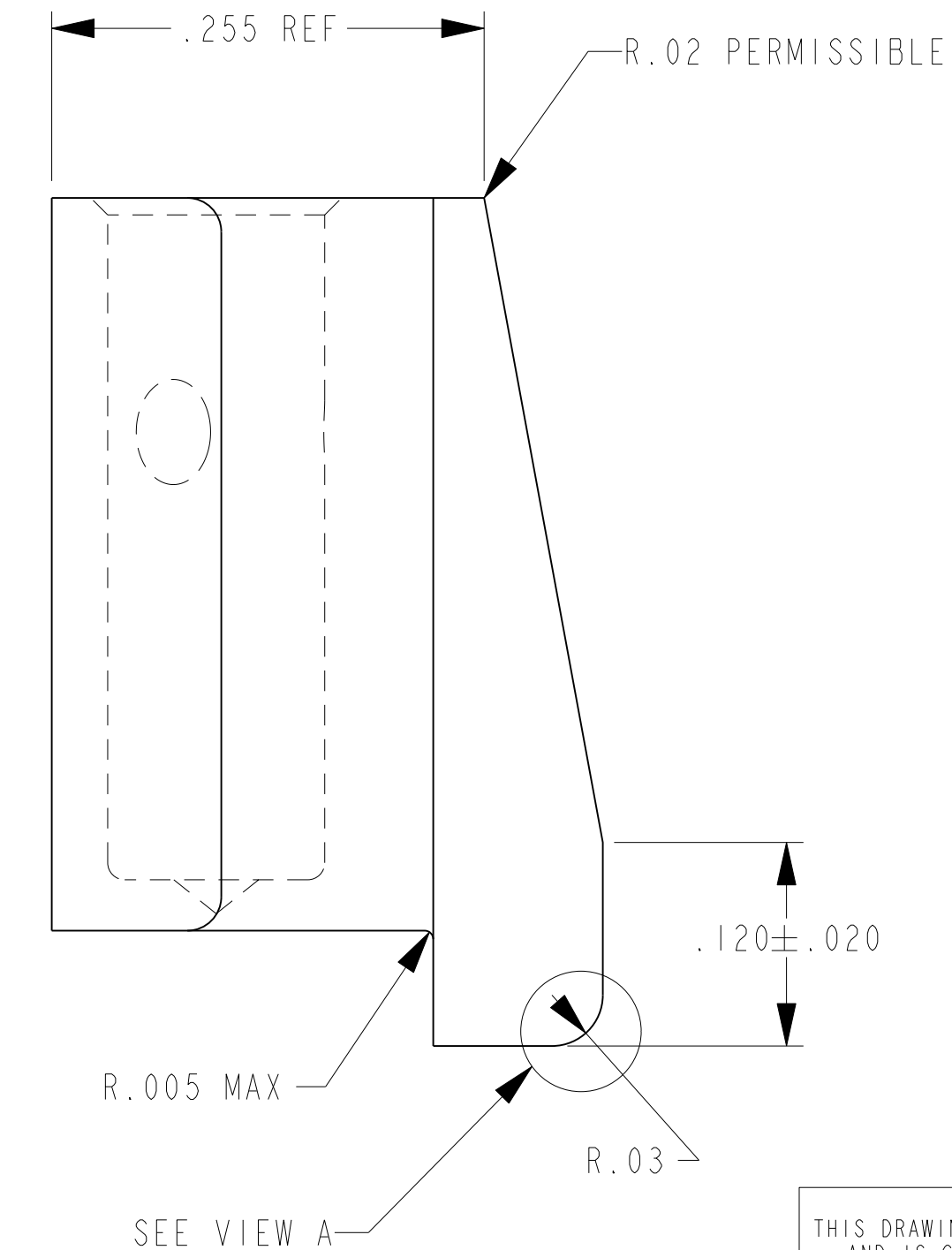
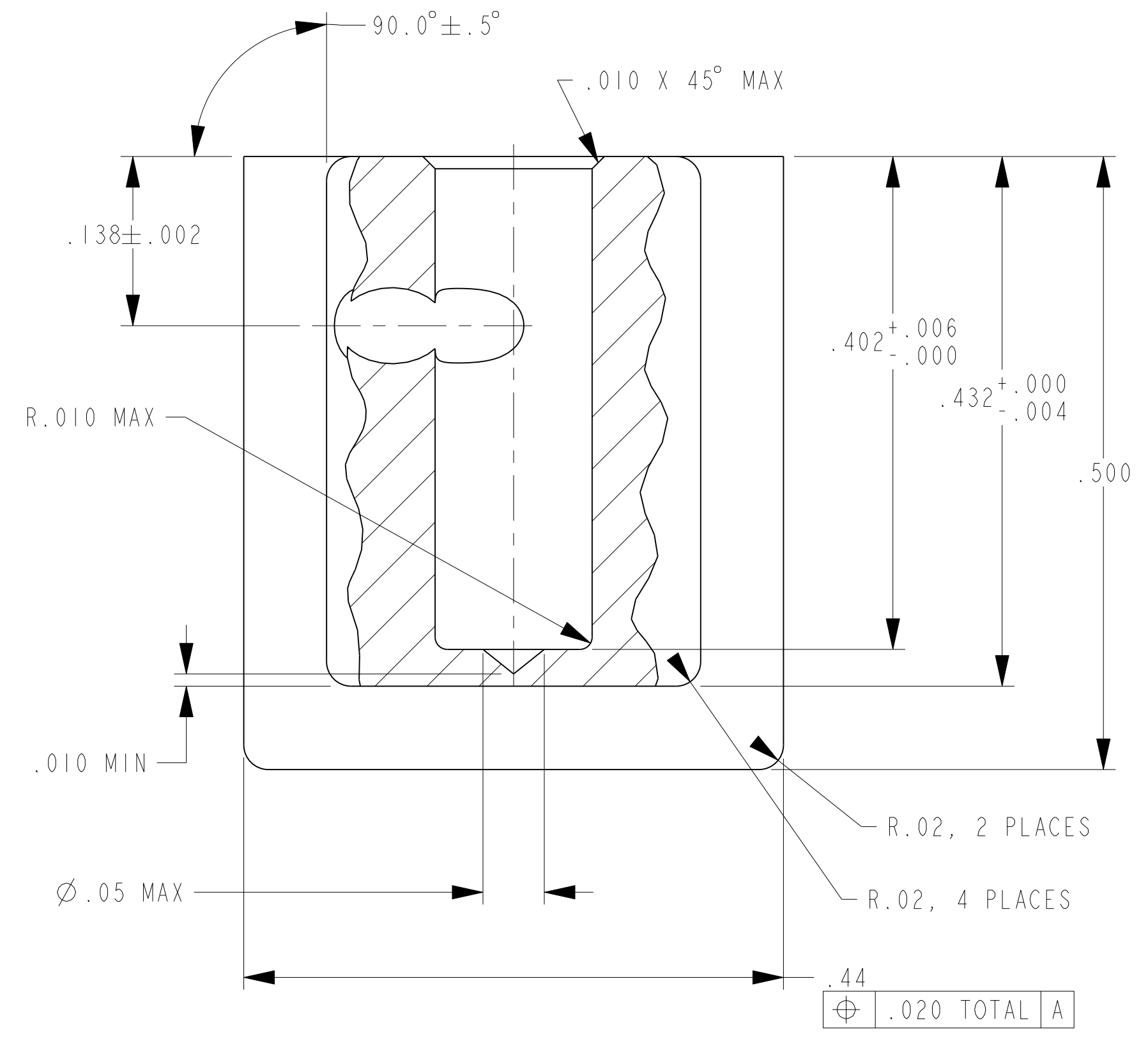
REVISIONS				
MODEL REV	DRAWING REV	DESCRIPTION	DATE(YEAR-MO-DA)	APPROVED
N/A	A	SEE ERR HOR 50625	1975-03-10	
N/A	B	NOR W3S3139 / 1983-08-08	1984-01-27	
N/A	C	NOR GIS2018 / 1990-07-08	1991-10-11	
N/A	D	NOR G3S3065 / 1993-07-15	1993-09-23	RLV
-	E	NOR LIS3048 / 2001-09-25	2002-05-22	JJW
A	F	NOR L3S3161 / 2004-03-31	2004-08-13	RLV
B	G	NOR L04S3044 / 2004-08-24	2004-12-08	RJC
C	H	NOR L1IS3031 / 2011-04-14	2011-04-21	RLV

NOTES

- APPLICABLE STANDARDS/SPECIFICATIONS:
A. MIL-W-13855
- MATERIAL: STEEL, CMPSN 1018 TO 1022, SPEC ASTM A108; OR SINTERED STEEL FN-0200 PER ASTM B783, WITH DENSITY 6.8 TO 7.2 G/CM³ AS DETERMINED BY ASTM B962. SINTERED MATERIAL SHALL BE SEALED WITH POLYESTER RESIN.
- SURFACE FINISH 125/.
- BREAK ALL SHARP EDGES .005+.010 EXCEPT AS NOTED.
- QUALITY ASSURANCE PROVISION REQUIREMENTS PER DRAWING 12993884 APPLY.



VIEW A
ALTERNATIVE CONFIGURATION
NOT TO SCALE



SEE VIEW A

THIS DRAWING WAS GENERATED FROM A SOLID MODEL AND IS CAD MAINTAINED. CHANGES SHALL BE INCORPORATED BY THE DESIGN ACTIVITY.

PART NO. 8448784

CURRENT DESIGN ACTIVITY CAGE CODE 19200
US ARMY
ARMAMENT RESEARCH, DEVELOPMENT AND ENGINEERING CENTER
PICATINNY ARSENAL, NEW JERSEY 07806-5000

DISTRIBUTION STATEMENT F: FURTHER DISTRIBUTION ONLY AS DIRECTED BY US ARMY ARDEC; AMSTA-AR-CCL-F, ROCK ISLAND, IL; 1993-09-14.

PMIC	M231	DO NOT SCALE DRAWING UNLESS OTHERWISE SPECIFIED DIMENSIONS ARE IN INCHES	CONTRACT NUMBER CONTRACTOR	DESIGN ACTIVITY US ARMY ROCK ISLAND ARSENAL ROCK ISLAND, ILLINOIS
	M4A1			
MECHANICAL PROPERTIES	M4	TOLERANCES ON ANGLES ± 2° 2 PLACE DECIMALS ± .01 3 PLACE DECIMALS ± .005	DRAWN BY S. GALL - ESERV	DATE(YEAR-MO-DA) 1972-09-15
	M16A4			
YP		THIRD ANGLE PROJECTION	G. STRAHL	J. WINDHAM
TS			ENGINEER	QUALITY ENGINEER
EL2			L. KO	L. CICHUCKI
RA	8448783	M16/M16A1	DRAWING APPROVAL L. BRUNTON 2001-09-25	DESIGN APPROVAL R. ELBE 2001-09-25
BH		NEXT ASSY		
RH		USED ON		
APPLICATION		MATL ENGR	MODELED BY S. GALL - ESERV	

HOUSING, COVER LATCH

SIZE D CAGE CODE 19204 DWG NO. 8448784

SCALE 10.000 UNIT WT. 0.010 SHEET 1 OF 1