

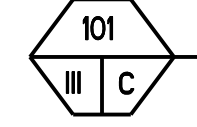
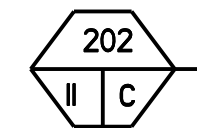
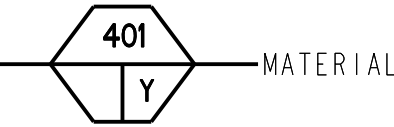
NOTICE: RESTRICTED AS TO USE AND DISCLOSURE

THIS ENTIRE DOCUMENT AND ALL INFORMATION IS PROPRIETARY TO COLT INC. AND SHALL NOT BE REPRODUCED, DUPLICATED OR COPIED IN WHOLE OR IN PART, DISCLOSED OR MADE AVAILABLE TO ANY OTHER PERSON, FIRM, OR CORPORATION OR OTHERWISE USED EXCEPT TO THE EXTENT NECESSARY FOR AND THEN ONLY IN CONNECTION WITH THE PREPARATION CONNECTION WITH THE PREPARATION AND/OR SUBMISSION OF BIDS OR PROPOSALS RELATED TO A PROCUREMENT BEING EFFECTED BY THE UNITED STATES EITHER BY THE UNITED STATES GOVERNMENT OR UNDER CONTRACT WITH THE UNITED STATES GOVERNMENT. THIS DOCUMENT WILL BE DISPOSED OF IN ACCORDANCE WITH THE INSTRUCTIONS ISSUED BY THE RESPONSIBLE CONTRACTING OFFICER UPON COMPLETION OF THE PURPOSE FOR WHICH IT WAS ISSUED.

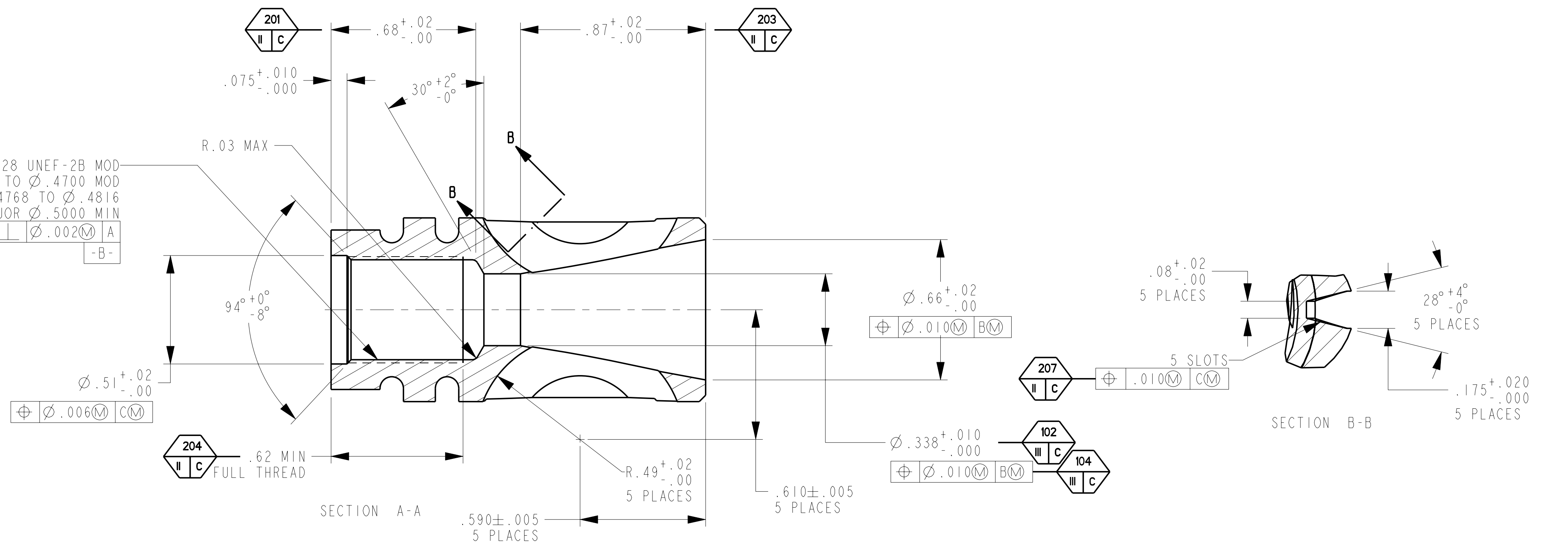
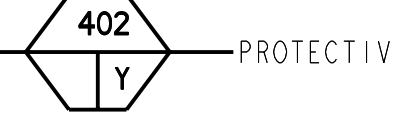
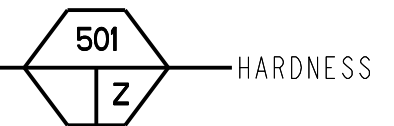
SPECIAL LICENSE RIGHTS THE GOVERNMENT'S RIGHTS TO USE, MODIFY, REPRODUCE, RELEASE, PERFORM, DISPLAY, OR DISCLOSE THESE DATA ARE RESTRICTED BY CONTRACT NO. DAAF03-67-C-108, LICENSE NO. DAAF03-67-C-108. ANY REPRODUCTION OF TECHNICAL DATA OR PORTIONS THEREOF MARKED WITH THIS LEGEND MUST ALSO REPRODUCE THE MARKINGS.

NOTES

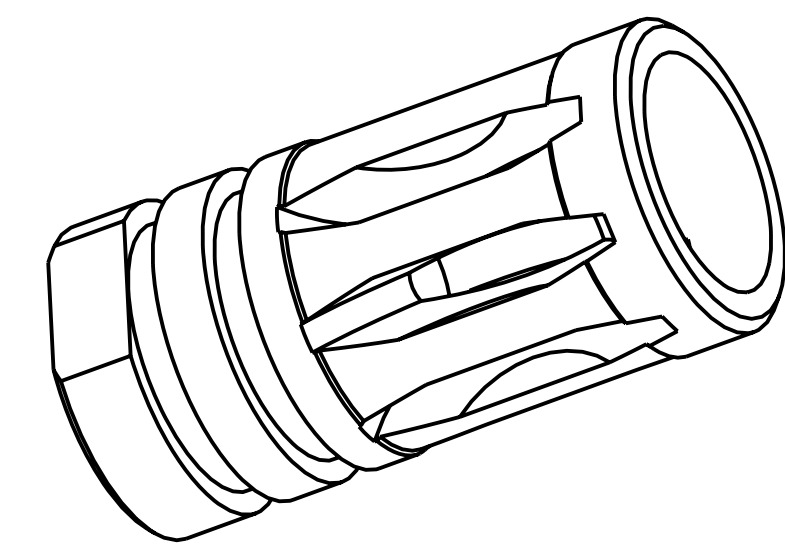
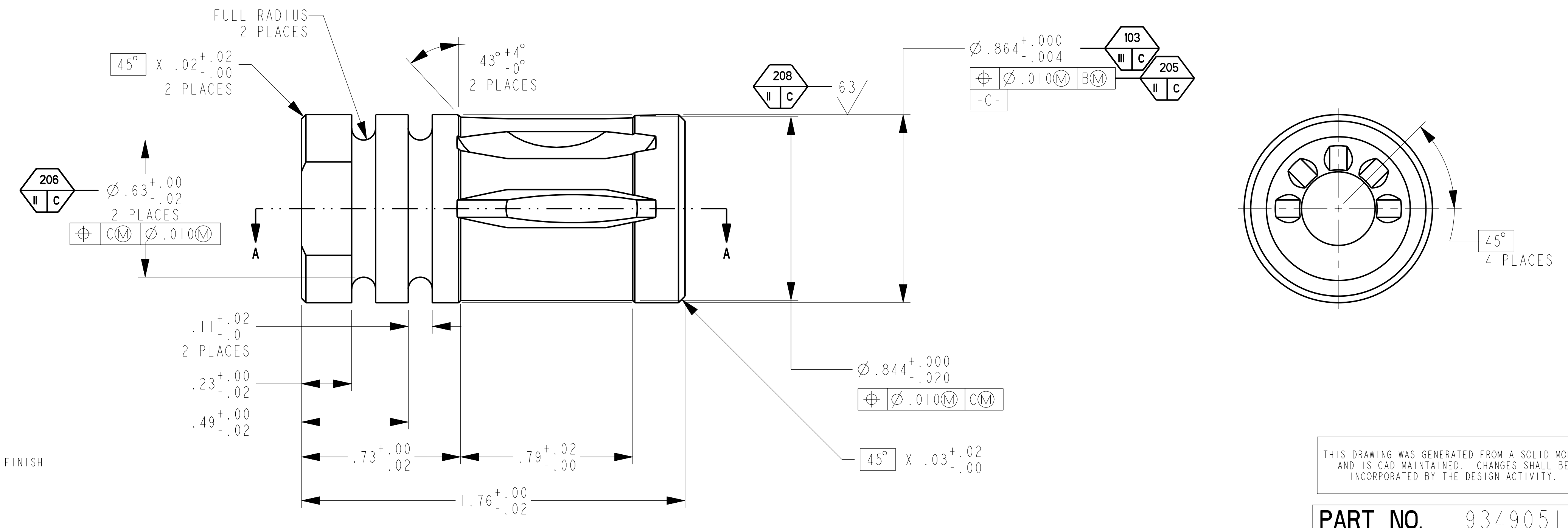
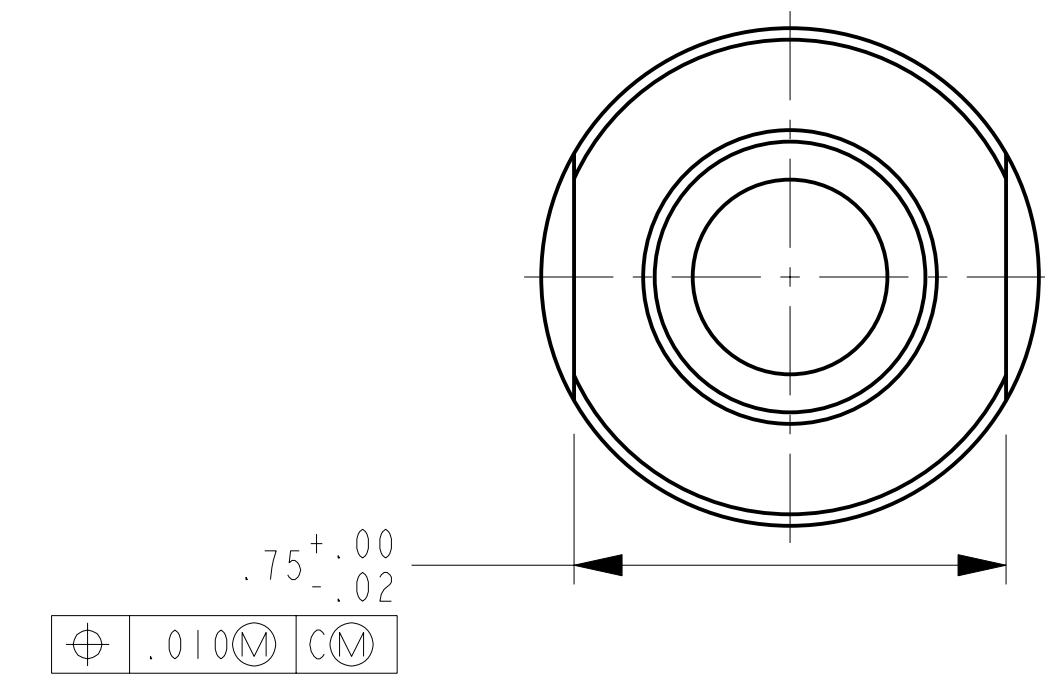
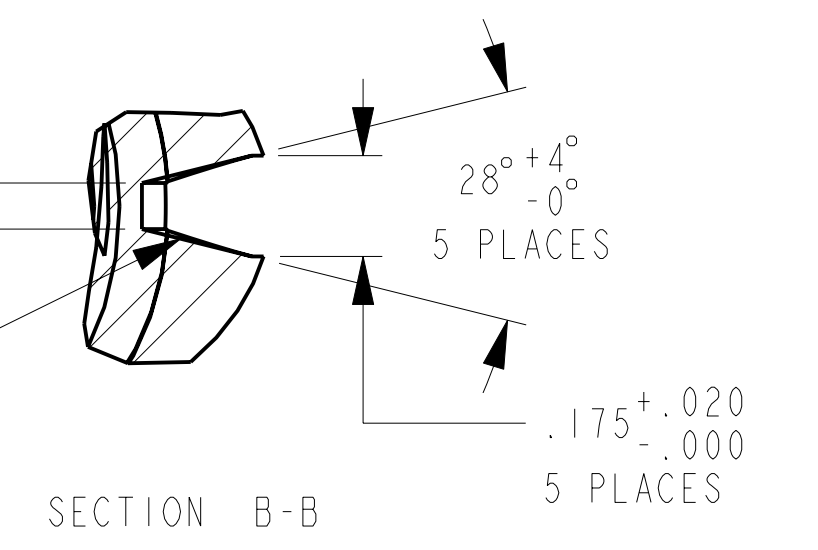
1. APPLICABLE SPECIFICATIONS AND STANDARDS:  
A. ANSI Y14.5-1973.  
B. MIL-W-13855.
2. MATERIAL: STEEL, AISI 4130 OR 4140 PER ASTM A 108.
3. ALL DIMENSIONS APPLY BEFORE PROTECTIVE FINISH.
4. BREAK EDGES .005<sup>+0.010</sup>/<sub>-.000</sub> EXCEPT AS NOTED.
5. FILLET RADII SHALL BE R.015<sup>+0.000</sup>/<sub>-.012</sub> EXCEPT AS NOTED.
6. HEAT TREAT TO ROCKWELL C 26 TO 34 OR EQUIVALENT.
7. SURFACE FINISH: 125/ EXCEPT AS NOTED.
8. PROTECTIVE FINISH: FINISH 5.3.1.2 OF MIL-STD-171.
9. QUALITY ASSURANCE PROVISION REQUIREMENTS PER DRAWING NUMBER 12993884 APPLY.



1/2-28 UNEF-2B MOD  
MINOR Ø .4660 TO Ø .4700 MOD  
PITCH Ø .4768 TO Ø .4816  
MAJOR Ø .5000 MIN  
Ø .002 A  
-B-



REVISIONS				
MODEL REV	DRAWING REV	DESCRIPTION	DATE (YEAR-MO-DA)	APPROVED
N/A	E	NOR G4S3001 / 1994-02-04	1994-05-18	
N/A	F	NOR L0S2048 / 2001-03-13	2001-04-06	RLV
-	G	NOR LIS3057 / 2001-11-19	2002-06-12	JJW
A	H	NOR L3S3161 / 2004-03-31	2004-08-13	RLV
B	J	NOR L09S3027 / 2009-04-17	2009-05-04	BMG



- 209 MISSING OR DEFECTIVE PROTECTIVE FINISH
- 210 WORKMANSHIP
- 502 SALT SPRAY TEST
- 503 COATING WEIGHT
- 504 SUPPLEMENTARY OIL TREATMENT, SALT SPRAY TEST

THIS DRAWING WAS GENERATED FROM A SOLID MODEL AND IS CAD MAINTAINED. CHANGES SHALL BE INCORPORATED BY THE DESIGN ACTIVITY.

PART NO. 9349051

DISTRIBUTION STATEMENT F: FURTHER DISTRIBUTION ONLY AS DIRECTED BY US ARMY ARDEC; AMSTA-AR-CCL-F, ROCK ISLAND, IL; 1993-09-14.

PMIC	12997148	M4A1	DO NOT SCALE DRAWING	CONTRACT NUMBER	DESIGN ACTIVITY
MECHANICAL PROPERTIES	12972680	M4	UNLESS OTHERWISE SPECIFIED DIMENSIONS ARE IN INCHES	CONTRACTOR	US ARMY ARMAMENT RESEARCH, DEVELOPMENT AND ENGINEERING CENTER PICATINNY ARSENAL, NEW JERSEY 07806-5000
YP	9390001	M16A4	TOLERANCES ON ANGLES ± 2°	DRAWN BY	COMPENSATOR
TS	12973010	M16A3	2 PLACE DECIMALS ± .01	DATE (YEAR-MO-DA)	
EL2	9349050	M16A2	3 PLACE DECIMALS ± .005	CHECKER	SIZE
RA	8448522	M16A1	THIRD ANGLE PROJECTION	ENGINEER	DWG NO.
BH	8448601	M16		QUALITY ENGINEER	9349051
RH	NEXT ASSY	USED ON	MATL ENGR	L. KO	SCALE
			MODELED BY	L. BRUNTON	3.000
				R. ELBE	CAGE CODE
					19200
					UNIT WT.
					0.152
					SHEET
					1 OF 1