

NOTICE: RESTRICTED AS TO USE AND DISCLOSURE

THIS ENTIRE DOCUMENT AND ALL INFORMATION IS PROPRIETARY TO COLT INC. AND SHALL NOT BE REPRODUCED, DUPLICATED OR COPIED IN WHOLE OR IN PART, DISCLOSED OR MADE AVAILABLE TO ANY OTHER PERSON, FIRM, OR CORPORATION OR OTHERWISE USED EXCEPT TO THE EXTENT NECESSARY FOR AND THEN ONLY IN CONNECTION WITH THE PREPARATION CONNECTION WITH THE PREPARATION AND/OR SUBMISSION OF BIDS OR PROPOSALS RELATED TO A PROCUREMENT BEING EFFECTED BY THE UNITED STATES EITHER BY THE UNITED STATES GOVERNMENT OR UNDER CONTRACT WITH THE UNITED STATES GOVERNMENT. THIS DOCUMENT WILL BE DISPOSED OF IN ACCORDANCE WITH THE INSTRUCTIONS ISSUED BY THE RESPONSIBLE CONTRACTING OFFICER UPON COMPLETION OF THE PURPOSE FOR WHICH IT WAS ISSUED.

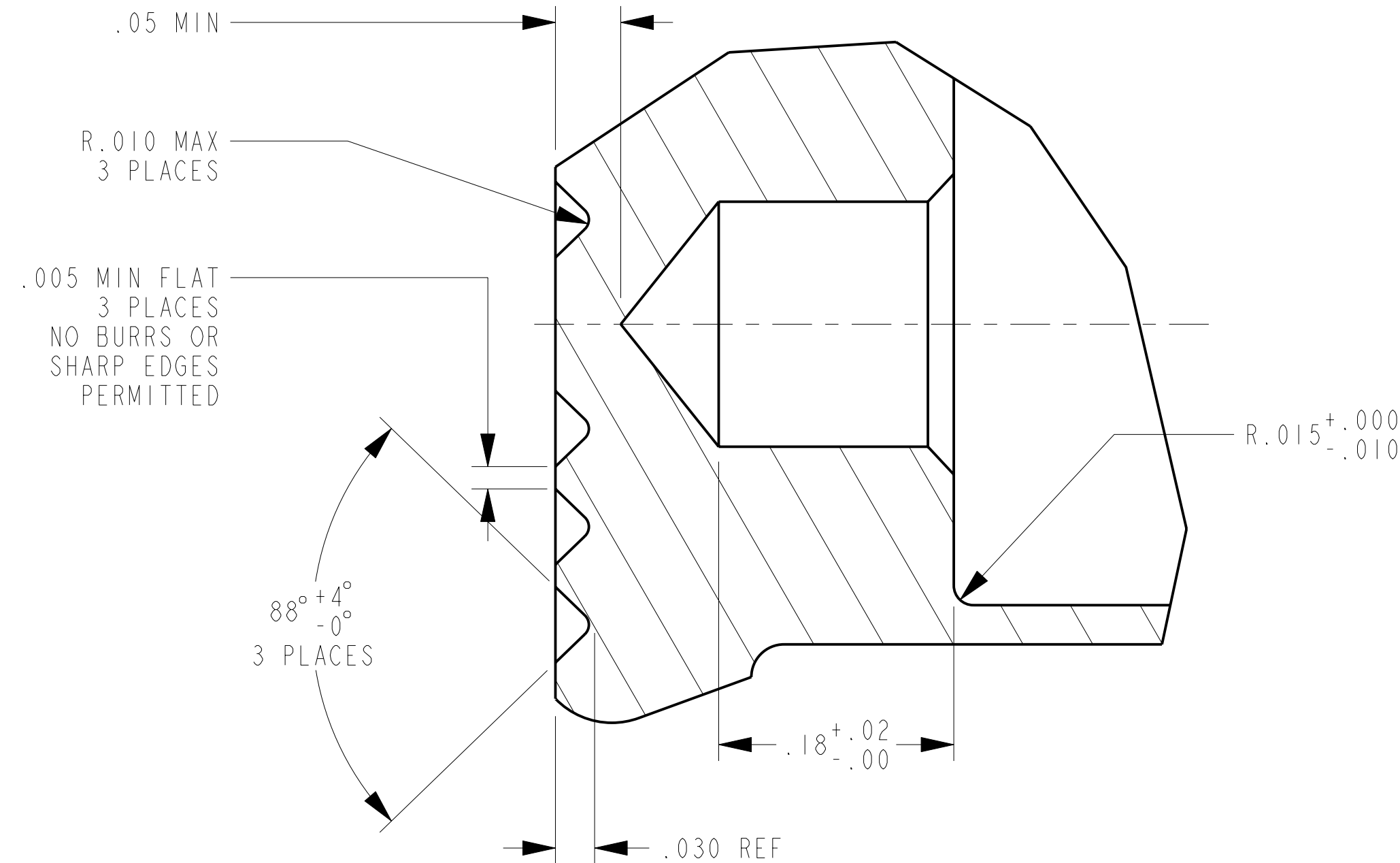
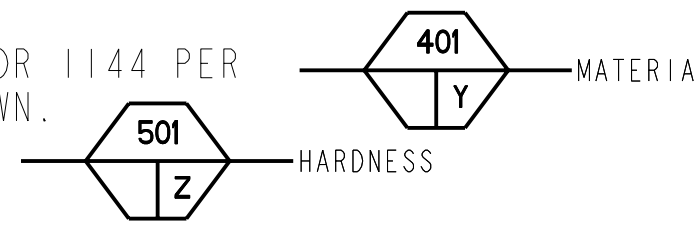
SPECIAL LICENSE RIGHTS  
 THE GOVERNMENT'S RIGHTS TO USE, MODIFY, REPRODUCE, RELEASE, PERFORM, DISPLAY, OR DISCLOSE THESE DATA ARE RESTRICTED BY CONTRACT NO. DAAFO3-67-C-108, LICENSE NO. DAAFO3-67-C-108. ANY REPRODUCTION OF TECHNICAL DATA OR PORTIONS THEREOF MARKED WITH THIS LEGEND MUST ALSO REPRODUCE THE MARKINGS.

DUE TO GOVERNMENT GENERATED ENGINEERING CHANGES, THERE MAY BE DATA AND/OR TOLERANCES NOT PROPRIETARY TO COLT'S.

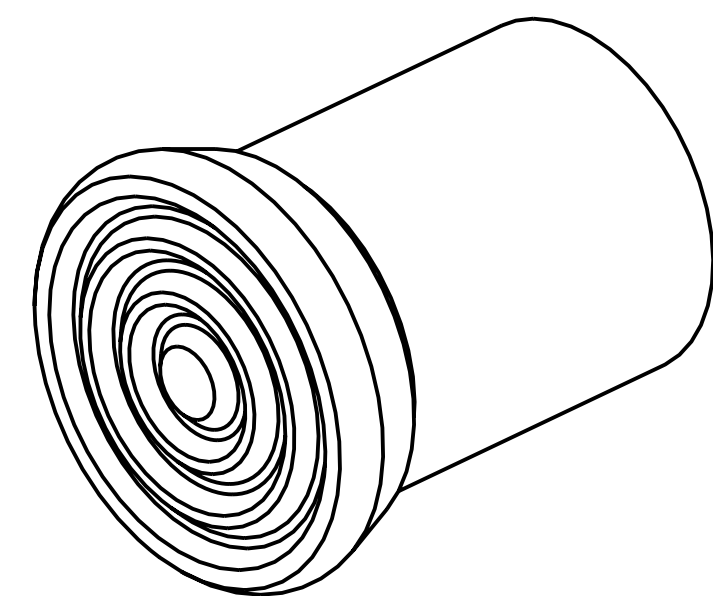
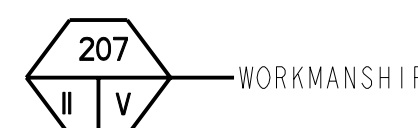
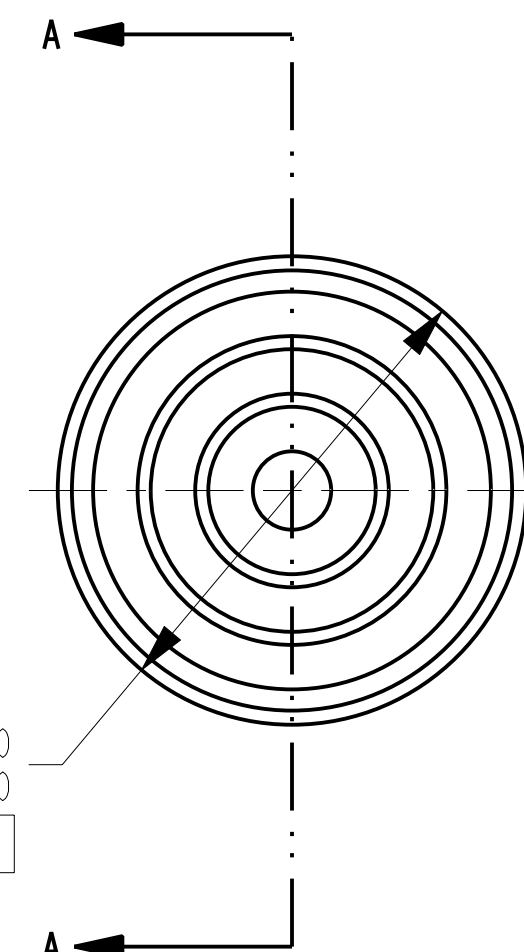
REVISIONS				
MODEL REV	DRAWING REV	DESCRIPTION	DATE(YEAR-MO-DA)	APPROVED
N/A	G	NOR G4S2136 / 1994-12-15	1995-04-28	HJS
N/A	H	NOR L7S3041 / 1997-07-25	1997-08-19	JB
-	J	NOR L1S3048 / 2001-09-25	2002-05-22	JJW
A	K	NOR L06S3020 / 2006-03-29	2006-05-02	BMG
B	L	NOR L08S3049 / 2008-04-30	2008-06-13	BMG

NOTES

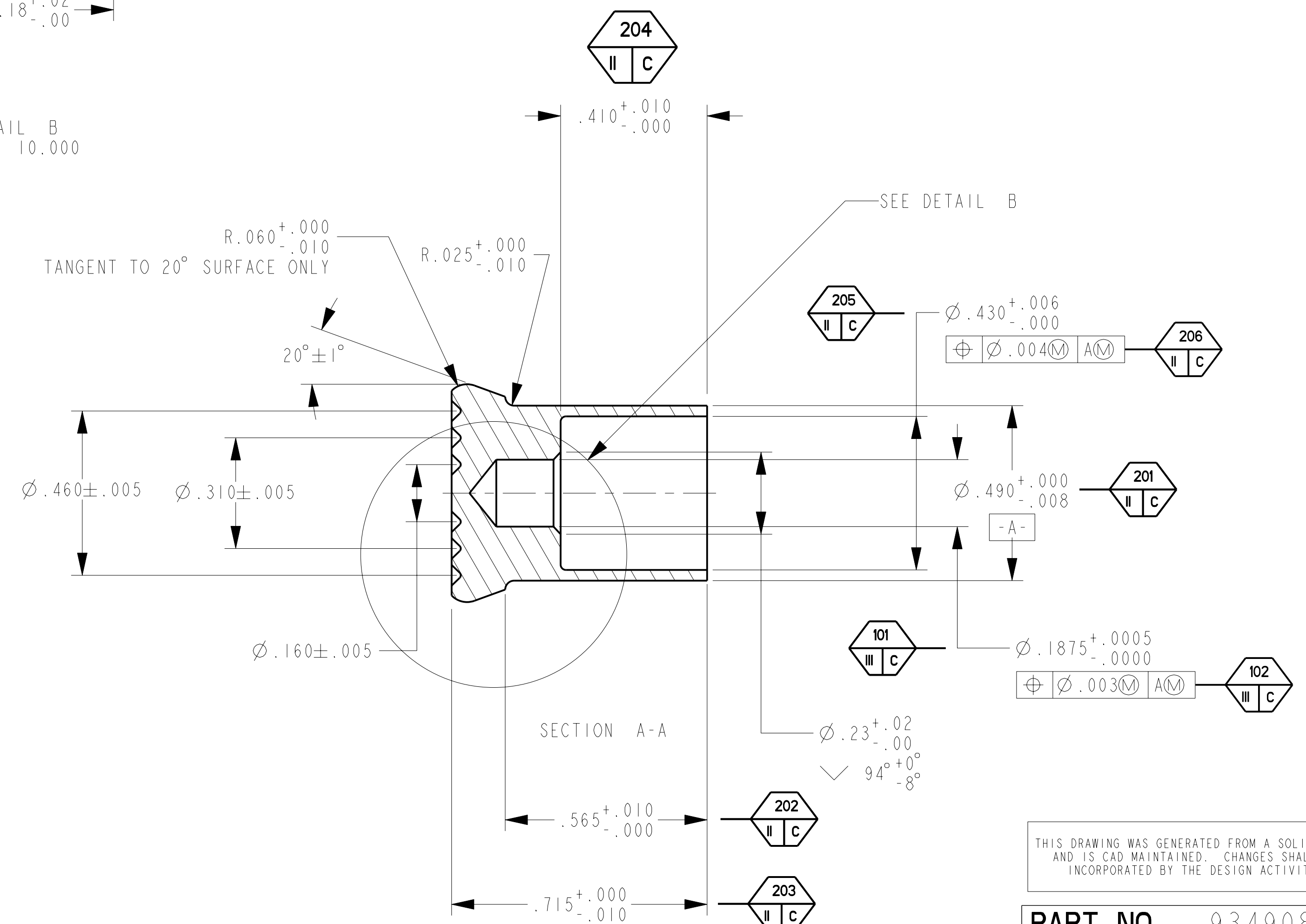
- MIL-W-13855 AND ANSI Y14.5-1973 APPLY.
- MATERIAL: STEEL, AISI 1137, 1141, OR 1144 PER ASTM A 108. ANNEALED AND COLD-DRAWN. HARDNESS: BRINELL 286 MAX.
- BREAK EDGES  $.005^{+.010}_{-.000}$  EXCEPT AS NOTED.
- ALL DIAMETERS  $\text{⌀} \text{AM} \text{⌀} .010 \text{M}$  EXCEPT AS NOTED.
- SURFACE FINISH: 125 EXCEPT AS NOTED.
- QUALITY ASSURANCE PROVISION REQUIREMENTS PER DRAWING NUMBER 12993884 APPLY.



DETAIL B  
SCALE 10.000



ISOMETRIC VIEW



PART NO. 9349084

DISTRIBUTION STATEMENT F: FURTHER DISTRIBUTION ONLY AS DIRECTED BY US ARMY ARDEC; AMSTA-AR-CCL-F, ROCK ISLAND, IL; 1993-09-14.

PMIC			DO NOT SCALE DRAWING	CONTRACT NUMBER	DESIGN ACTIVITY US ARMY ARMAMENT RESEARCH, DEVELOPMENT AND ENGINEERING CENTER PICATINNY ARSENAL, NEW JERSEY 07806-5000
			UNLESS OTHERWISE SPECIFIED DIMENSIONS ARE IN INCHES	CONTRACTOR	
MECHANICAL PROPERTIES	M4A1		TOLERANCES ON ANGLES ± 2° 2 PLACE DECIMALS ± .01 3 PLACE DECIMALS ± .005	DRAWN BY G. STRAHL	DATE(YEAR-MO-DA) 1982-02-26
YP	M4		THIRD ANGLE PROJECTION	CHECKER S. GALL - ESERV	ENGINEER J. WINDHAM
TS	M16A4			ENGINEER L. KO	QUALITY ENGINEER L. CICHUCKI
EL2	M16A3			DRAWING APPROVAL L. BRUNTON	2001-09-25
RA	M16A2			DESIGN APPROVAL R. ELBE	2001-09-25
BH	9349085	M16A1			
RH			APPLICATION		
			MATL ENGR	MODELED BY	
				G. STRAHL	

CAP, PLUNGER

SIZE D	CAGE CODE 19200	DWG NO. 9349084
SCALE 4.000	UNIT WT. 0.0230	SHEET 1 OF 1