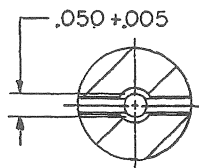
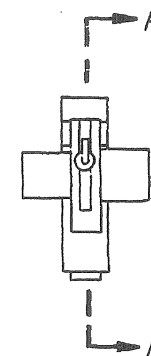
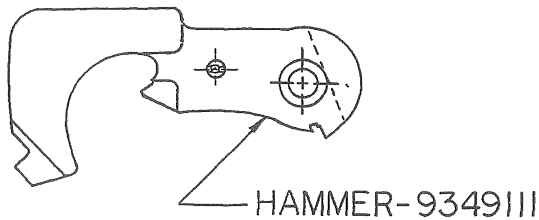
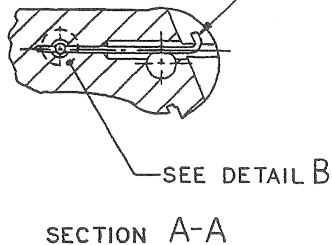


NOTICE: RESTRICTED AS TO USE AND DISCLOSURE  
THIS ENTIRE DOCUMENT AND ALL INFORMATION THEREON IS PROPRIETARY TO COLTS INC AND SHALL NOT BE REPRODUCED, DUPLICATED OR COPIED IN WHOLE OR IN PART, DISCLOSED OR MADE AVAILABLE TO ANY OTHER PERSON, FIRM OR CORPORATION OR OTHERWISE USED EXCEPT TO THE EXTENT NECESSARY FOR AND THEN ONLY IN CONNECTION WITH THE PREPARATION AND/OR SUBMISSION OF BIDS OR PROPOSALS RELATED TO A PROCUREMENT BEING EFFECTED BY THE UNITED STATES GOVERNMENT OR IN CONNECTION WITH THE MANUFACTURE IN THE UNITED STATES EITHER BY THE UNITED STATES GOVERNMENT OR UNDER A CONTRACT WITH THE UNITED STATES GOVERNMENT THIS DOCUMENTARY WILL BE DEPOSED OF IN ACCORDANCE WITH INSTRUCTIONS ISSUED BY THE RESPONSIBLE CONTRACTING OFFICER UPON COMPLETION OF THE PURPOSE FOR WHICH IT WAS ISSUED.

REVISIONS			
SYM	DESCRIPTION	DATE	APPROVAL
-	PRODUCTION RELEASE ERRW252013	820614	<i>P. H. ...</i>
A	NORW450030/84-11-15	850402	<i>HW 270</i>
B	NOR GIS2018 9107 08	91-10-11	<i>...</i>

- NOTES:-
- 1 - SPEC. MIL-W-13855 AND ANSI Y14.5-73 APPLY.
  - 2 - COIN BOTH SIDES OF RETAINER (8448614), AFTER COINING RETAINER IS TO HAVE .010 MIN LONGITUDINAL MOVEMENT.

RETAINER, HAMMER PIN-8448614



DETAIL B  
SCALE 4/1

FOR ENGINEERING PARTS LIST SEE PL 9349110

PART NO. 9349110

		MECHANICAL PROPERTIES		DO NOT SCALE DRAWING UNLESS OTHERWISE SPECIFIED DIMENSIONS ARE IN INCHES		ORIGINAL DATE OF DRAWING 82-02-26		U S ARMY ARMAMENT RESEARCH AND DEVELOPMENT CENTER DOVER, NEW JERSEY 07801	
		YP		TOLERANCES ON DECIMALS ±		DRAFTSMAN	DHB	CHECKER	JWH
		TS		FRACTIONS ±      ANGLES ±		ENGR	<i>P. H. ...</i>	ENGR	
		EL2				ENGR		ENGR	
		RA				ENGR		ENGR	
9390032 M4		BH				<i>...</i>		SIZE	FSCM NO
9349106 M16A1E1		RH				<i>...</i>		C	19200
NEXT ASSY									9349110
USED ON								SCALE	2/1
APPLICATION								UNIT WT.	
								SHEET	1 OF 1