

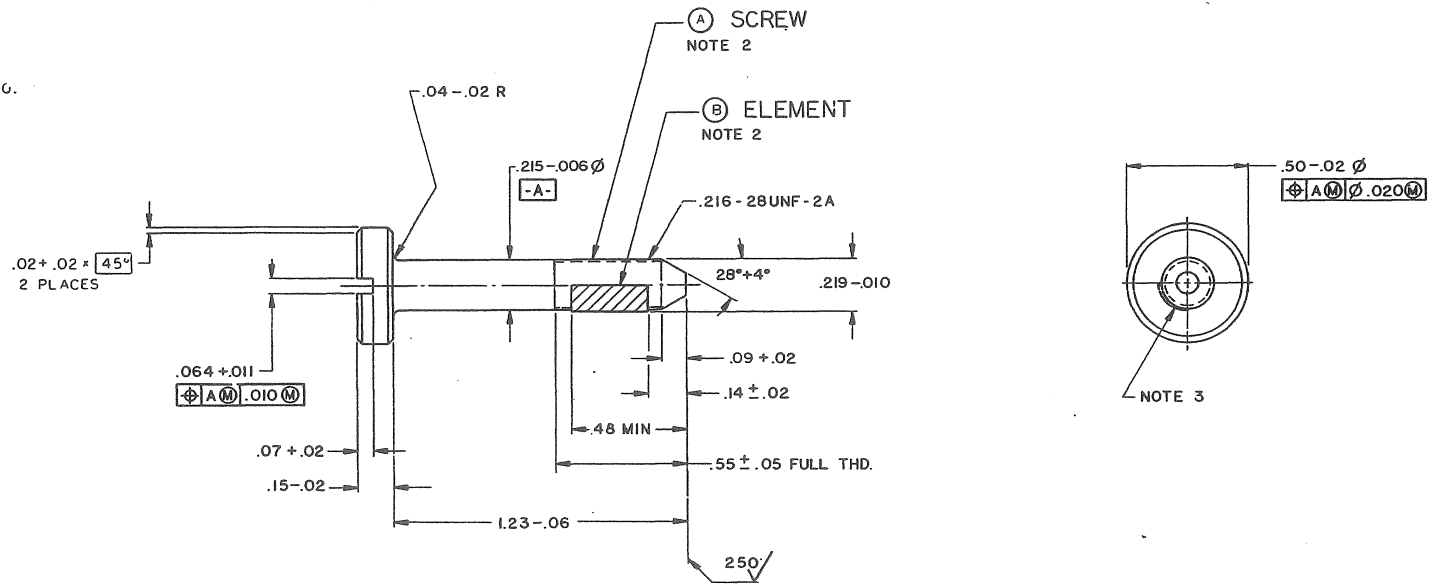
NOTICE: RESTRICTED AS TO USE AND DISCLOSURE

THIS ENTIRE DOCUMENT AND ALL INFORMATION THEREIN IS PROPRIETARY TO GLETS INC AND SHALL NOT BE REPRODUCED, DUPLICATED OR COPIED IN WHOLE OR IN PART, DISCLOSED OR MADE AVAILABLE TO ANY OTHER PERSON, FIRM OR CORPORATION OR OTHERWISE USED EXCEPT TO THE EXTENT NECESSARY FOR AND THEN ONLY IN CONNECTION WITH THE PREPARATION AND/OR SUBMISSION OF BIDS OR PROPOSALS RELATED TO A PROCUREMENT BEING EFFECTED BY THE UNITED STATES GOVERNMENT OR IN CONNECTION WITH THE MANUFACTURE IN THE UNITED STATES EITHER BY THE UNITED STATES GOVERNMENT OR UNDER A CONTRACT WITH THE UNITED STATES GOVERNMENT. THIS DOCUMENT WILL BE REPRODUCED IN ACCORDANCE WITH RESTRICTIONS ISSUED BY THE RESPONSIBLE CONTRACTING OFFICER UPON COMPLETION OF THE PURPOSE FOR WHICH IT WAS ISSUED.

REVISIONS			
SYM	DESCRIPTION	DATE	APPROVAL
—	PRODUCTION RELEASE ERRW252013	820614	<i>[Signature]</i>
A	NOR W453G11 / 84-05-20	840720	<i>[Signature]</i>
B	NOR W450030 / 84-11-15	850402	<i>[Signature]</i>
C	NOR W5S8004 / 860204	890215	<i>[Signature]</i>

NOTES:—

- 1 — SPEC. MIL-W-13855 AND ANSI Y14.5-73 APPLY.
- 2 — MATERIAL:—
 - A. SCREW-STEEL, AISI 1030-1040.
 - B. ELEMENT—MUST MEET THE PERFORMANCE REQUIREMENTS OF MIL-F-18240 CONFIGURATION B PATCH.
- 3 — COVERAGE OF ELEMENT TO BE 90° MIN OF THREADED DIA. RANDOM RADIAL LOCATION OF ELEMENT.
- 4 — BREAK SHARP EDGES .005 +.010.
- 5 — FILLET RADII .015 -.012.
- 6 — FINISH $125\sqrt{\text{ }}$ ALL OVER EXCEPT AS NOTED.
- 7 — PROTECTIVE FINISH - 5.3.1.2 OR 5.3.2.2 OF MIL-STD-171.
- 8 — HEAT TREATMENT—HARDEN AND TEMPER TO RC 30-40.



PART NO. 9349120

U S ARMY ARMAMENT RESEARCH AND DEVELOPMENT CENTER
DOVER, NEW JERSEY 07801

SCREW, SWIVEL

MECHANICAL PROPERTIES		DO NOT SCALE DRAWING UNLESS OTHERWISE SPECIFIED DIMENSIONS ARE IN INCHES		ORIGINAL DATE OF DRAWING 82-02-26	U S ARMY ARMAMENT RESEARCH AND DEVELOPMENT CENTER DOVER, NEW JERSEY 07801	
YP		TOLERANCES ON DECIMALS =		DRAFTSMAN MAM	CHECKER JWH	SIZE D FSCM NO. 19200 9349120
TS		FRACTIONS =	ANGLES =	ENGR R.A.	ENGR JWH	
BS				ENGR R.A.	ENGR JWH	SCALE 4 / 1 UNIT WT.
RA						SHEET 1 OF 1
BM	M16					
BM	M16A1					
BM	M16A2					
BM						
APPLICATION						