

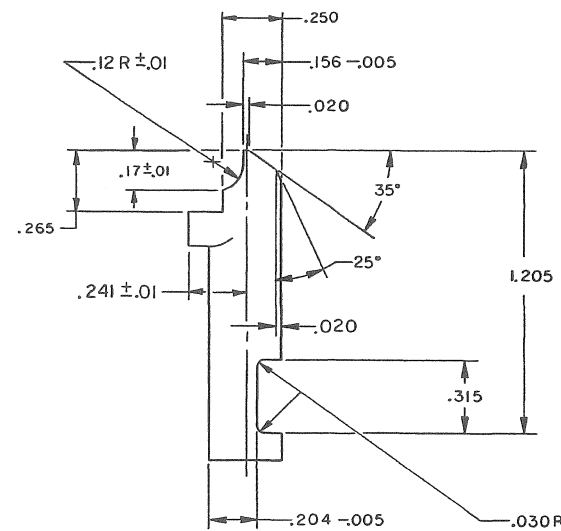
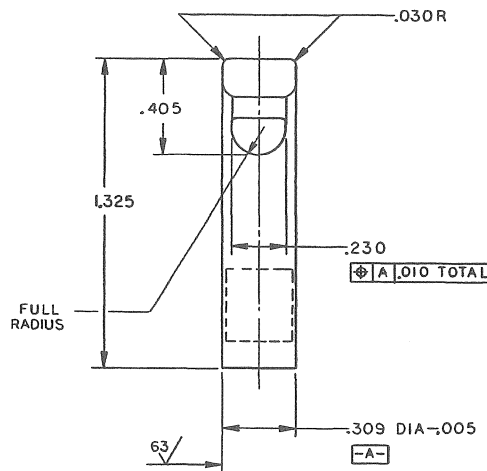
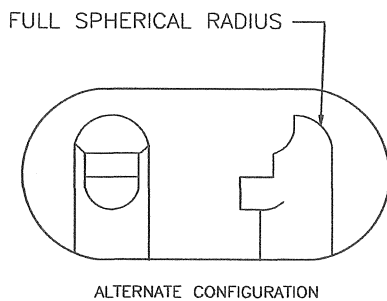
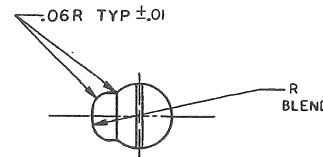
NOTES: RESTRICTED AS TO USE AND DISCLOSURE

THIS ENTIRE DOCUMENT AND ALL INFORMATION THEREON IS PROPRIETARY TO COLT INC AND SHALL NOT BE REPRODUCED, DUPLICATED OR COPIED IN WHOLE OR IN PART, DISCLOSED OR MADE AVAILABLE TO ANY OTHER PERSON FIRM OR CORPORATION OR OTHERWISE USED EXCEPT TO THE EXTENT NECESSARY FOR AND THEN ONLY IN CONNECTION WITH THE PREPARATION AND/OR SUBMISSION OF BIDS OR PROPOSALS RELATED TO A PROCUREMENT BEING OFFERED BY THE UNITED STATES GOVERNMENT OR IN CONNECTION WITH THE MANUFACTURE IN THE UNITED STATES EITHER BY THE UNITED STATES GOVERNMENT OR UNDER A CONTRACT WITH THE UNITED STATES GOVERNMENT. THIS DOCUMENT WILL BE DEPOSED OF IN ACCORDANCE WITH INSTRUCTIONS ISSUED BY THE RESPONSIBLE CONTRACTING OFFICER UPON COMPLETION OF THE PURPOSE FOR WHICH IT WAS ISSUED.

NOTE:

- 1-SPEC MIL-W-13855 APPLIES
- 2-MATERIAL:-STEEL BAR, CARBON GRADE 1117 COLD FINISHED PER ASTM A108.
ALTERNATIVE MATERIAL: STEEL AISI 1018.
- 3-CARBURIZE (TOTAL CASE DEPTH .006 TO .011) HARDEN AND TEMPER. HARDNESS TO BE FILE HARD.
- 4-FINISH:-125/ EXCEPT AS NOTED.
- 5-PROTECTIVE FINISH:-5.3.1.3 OR 5.3.2.3 PLUS 30.7 OF MIL-STD-171.

REVISIONS			
SYM	DESCRIPTION	DATE	APPROVAL
	PRODUCTION RELEASE	29 OCT 83	TT
	ERR W3S3149/83-11-14		
A	NOR W4S3013/84-06-01	840913	<i>[Signature]</i>
B	NOR W4S0030/84-11-15	850402	<i>[Signature]</i>
C	NOR W6S3004/86-02-24	870218	<i>[Signature]</i>
D	NOR W5S8004/860204	890215	<i>[Signature]</i>
E	NOR L7S3006/970224	970321	DR



PART NO. 9381378		U S ARMY ARMAMENT RESEARCH AND DEVELOPMENT CENTER DOVER, NEW JERSEY 07801	
PLUNGER		SIZE D	FSCM NO. 19200
APPLICATION		SCALE 4/1	UNIT WT.
		SHEET	

MECHANICAL PROPERTIES		DO NOT SCALE DRAWING		ORIGINAL DATE OF DRAWING 83-12-21	
TY		UNLESS OTHERWISE SPECIFIED		DRAFTSMAN	
TS		DIMENSIONS ARE IN INCHES		CHECKER	
BL2		TOLERANCES ON DECIMALS = .005		ENGR <i>[Signature]</i>	
BA		FRACTIONS = ANGLES = 2°		ENGR	
BH				ENGR	
BR				ENGR	
9381380	M16A2			<i>[Signature]</i> <i>[Signature]</i>	
NEXT ASSY	USED ON				