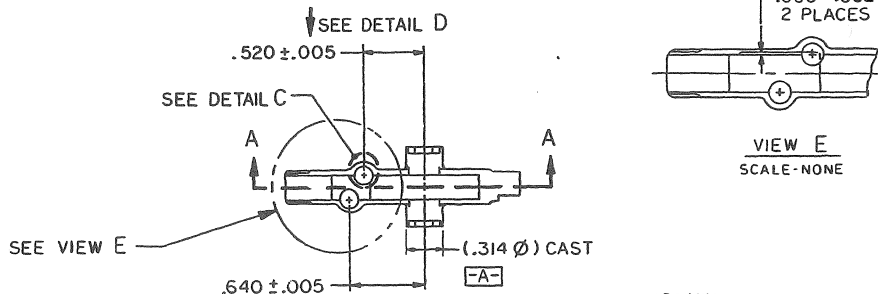


NOTICE: RESTRICTED AS TO USE AND DISCLOSURE

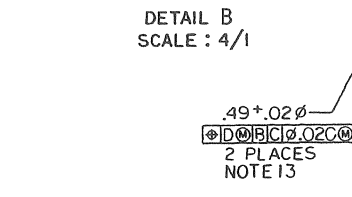
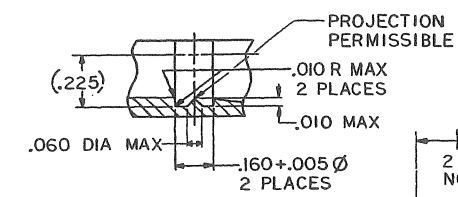
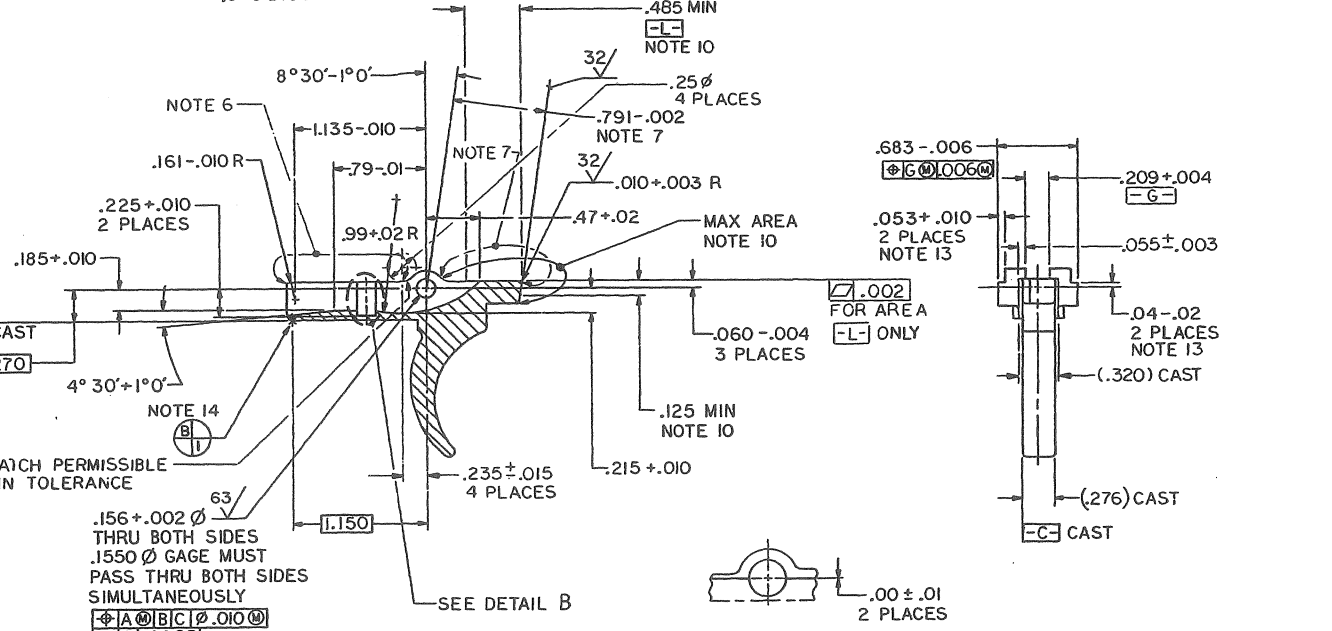
THIS ENTIRE DOCUMENT AND ALL INFORMATION THEREON IS PROPRIETARY TO COATS INC AND SHALL NOT BE REPRODUCED, IN WHOLE OR IN PART, DISCLOSED OR MADE AVAILABLE TO ANY OTHER PERSON, FIRM OR CORPORATION OR ANY OTHER ENTITY EXCEPT TO THE EXTENT NECESSARY FOR AND THIS ONLY IN CONNECTION WITH THE PREPARATION AND/OR SUBMISSION OF BIDS OR PROPOSALS RELATED TO A PROCUREMENT BEING EFFECTED BY THE UNITED STATES GOVERNMENT OR IN CONNECTION WITH THE MANUFACTURE IN THE UNITED STATES BY THE UNITED STATES GOVERNMENT UNDER A CONTRACT WITH THE UNITED STATES GOVERNMENT. THIS DOCUMENT SHALL BE RETURNED TO THE CONTRACTING OFFICE IN ACCORDANCE WITH THE INSTRUCTIONS ISSUED BY THE RESPONSIBLE CONTRACTING OFFICER UPON COMPLETION OF THE PURPOSE FOR WHICH IT WAS ISSUED.

NOTES:-

- 1- SPEC. MIL-W-13855 AND ANSI Y14.5-73 APPLY.
- 2- MATERIAL: - TRIGGER CASTING-9390737.
- 3- ALL DIMENSIONS EXCEPT DIMENSIONS IN AREA IDENTIFIED BY NOTE 10 APPLY BEFORE FINAL PROTECTIVE FINISH.
- 4- BREAK SHARP EDGES .005 +.010 UNLESS OTHERWISE NOTED.
- 5- FILLET RADIUS .015 -.012 UNLESS OTHERWISE NOTED.
- 6- IF MACHINED AFTER HEAT TREAT, .005 MAX STOCK REMOVAL PERMISSIBLE.
- 7- GRIND AFTER HEAT TREAT AND FINAL PROTECTIVE FINISH, MAX METAL REMOVED BY GRINDING .005.
- 8- HEAT TREATMENT: - GAS CARBURIZE TO PRODUCE A TOTAL CASE DEPTH OF .010 TO .014. HARDEN & TEMPER TO PRODUCE A SURFACE HARDNESS EQUIV. TO RH 15N 88.5 TO 90.
- 9- FINISH $125\sqrt{\text{ }}$ ALL SURFACES, EXCEPT AS NOTED.
- 10- NO FINAL PROTECTIVE FINISH IN THIS AREA, COAT WITH A CORROSION RESISTANT OIL PER MIL-L-315C.
- 11- PROTECTIVE FINISH: - 5.3.1.2 OF MIL-STD-171.
- 12- FINISHED PART SHALL BE CAPABLE OF MEETING MIL-STD-2175, CLASS 3, GRADE A.
- 13- FEATURES SO IDENTIFIED MAY BE PRODUCED AS CAST, PROVIDED THEY MEET THE FINAL DIMENSIONAL CHARACTERISTICS SPECIFIED HEREIN.
- 14- NO FLASH PERMISSIBLE AT DATUM TARGET BI LOCATION.



REVISIONS			
SYM	DESCRIPTION	DATE	APPROVAL
-	PRODUCTION RELEASE ERR W450028/84-10-16	550299	
A	NOR W533026/85-07-23 (ECP W532098/85-11-21) (ECP W633029/86-05-27)	860724	
B	NOR G053163/901024	901217	GR, L, RM
C	NOR G152018/ 91 07 08	91-10-11	PR, L, RM
D	NOR G053057/900423 (ECP G153179/920115)	920227	RV, L, RM
E	NOR G153175/920107 (ECP G253020/920229)	92 03 31	AJL, S, R
F	NOR G253058/920716 (ECP G253060/920830)	92 08 11	AJL, S, R
G	NOR G353080 930903 931101	93 11 01	TR, S, R
H	NOR G453000 940204	940523	TR, S, R



DISTRIBUTION STATEMENT E: FURTHER DISTRIBUTION ONLY AS DIRECTED BY ASQC-AR OR HIGHER DOD AUTHORITY; 92-86-22.

H	H
SHEET 2	SHEET 1
REVISION STATUS OF SHEETS	

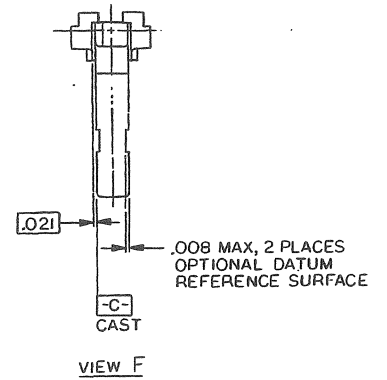
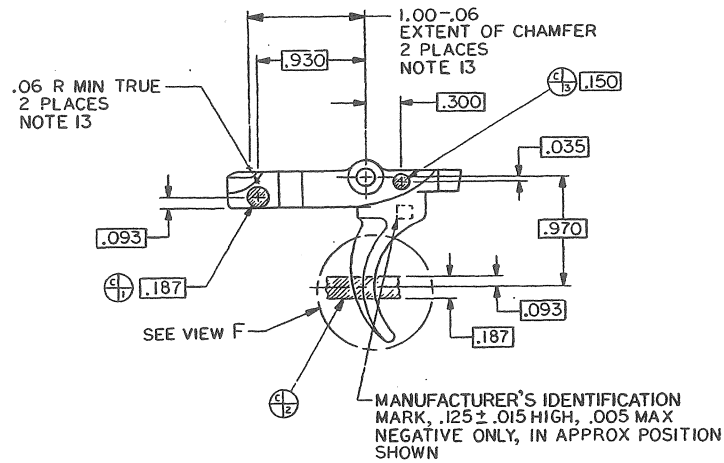
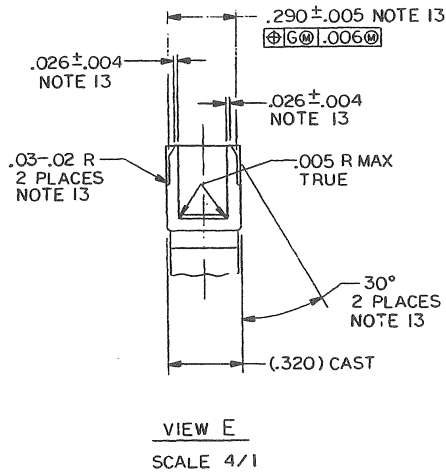
PART NO. 9390736

MECHANICAL PROPERTIES		DO NOT SCALE DRAWING UNLESS OTHERWISE SPECIFIED DIMENSIONS ARE IN INCHES		ORIGINAL DATE OF DRAWING 85-02-04		U.S. ARMY ARMAMENT RESEARCH AND DEVELOPMENT CENTER DOVER, NEW JERSEY 07801	
YP		TOLERANCES ON DECIMALS: FRACTIONS: ° ANGLES: °		DRAFTSMAN	CHECKER	TRIGGER	
TS				ENGR	ENGR		
ELZ				ENGR	ENGR		
RA						SIZE D 19200	
BN						FSCM NO. 9390736	
RV						SCALE 2/1 UNIT WT. SHEET 1 OF 2	
APPLICATION							

NOTICE: RESTRICTED AS TO USE AND DISCLOSURE

THIS ENTIRE DOCUMENT AND ALL INFORMATION THEREIN IS PROPRIETARY TO CRIS INC AND SHALL NOT BE REPRODUCED, DUPLICATED OR COPIED IN WHOLE OR IN PART, UNLESS OR MADE AVAILABLE TO ANY OTHER PERSON, FIRM OR CORPORATION OR OTHERWISE USED EXCEPT TO THE EXTENT NECESSARY FOR AND THIS ONLY IN CONNECTION WITH THE PROPRIETARY ANALYSIS, DESIGN OR PROFORMA RELATED TO A PROCUREMENT BEING EFFECTED BY THE UNITED STATES GOVERNMENT OR IN CONNECTION WITH THE MANUFACTURE IN THE UNITED STATES BY THE UNITED STATES GOVERNMENT OR UNDER A CONTRACT WITH THE UNITED STATES GOVERNMENT. THIS INCHMENT WILL BE REPOSED OF IN ACCORDANCE WITH RESTRICTIONS ISSUED BY THE RESPONSIBLE CONTRACTING OFFICER UPON COMPLETION OF THE PURPOSE FOR WHICH IT WAS ISSUED.

REV	DESCRIPTION	DATE	APPROVAL
-	PRODUCTION RELEASE ERRW4S0028/841016	850209	
A	NOR W5S3026/85-07-23 (ECP W6S3029/86-05-27)	860724	<i>AW</i>
F	NOR G2S3059/920716 (ECP G2S3060/920630)	920811	AJL <i>AW</i>
G	NOR G3S3080 930903	931101	<i>AW</i>
H	NOR G4S3000 940204	940523	<i>AW</i>



DISTRIBUTION STATEMENT F: FURTHER DISTRIBUTION ONLY AS DIRECTED BY ASQC-AR OR HIGHER DOD AUTHORITY; 92-06-22.

PART NO. 9390736

MECHANICAL PROPERTIES		DO NOT SCALE DRAWING UNLESS OTHERWISE SPECIFIED	ORIGINAL DATE OF DRAWING 85-02-04	U.S. ARMY ARMAMINT RESEARCH AND DEVELOPMENT CENTER DOVER, NEW JERSEY 07801
YP		DIMENSIONS ARE IN INCHES	DRAFTSMAN <i>AW</i>	CHECKER
TS		TOLERANCES ON DECIMALS =	ENGR <i>AW</i>	ENGR
SLP		FRACTIONS =	ENGR	ENGR
RA		ANGLES =		
9392518	M16A2		<i>Edward J. Grana</i>	
NEXT ASSY	USED ON			
APPLICATION				

TRIGGER
SIZE D FSCM NO. 19200 9390736
SCALE 2/1 UNIT IN SHEET 2 OF 2